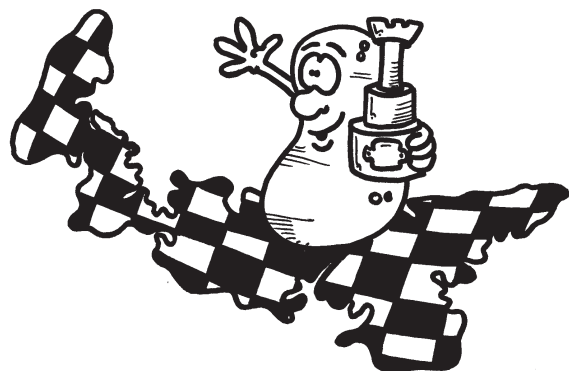
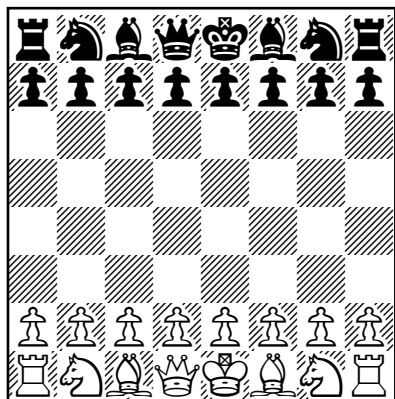


PRINCE EDWARD ISLAND YOUTH CHESS ASSOCIATION



2011-2012 INFORMATION PAMPHLET & SCHEDULE OF EVENTS



PRINCE EDWARD ISLAND YOUTH CHESS ASSOCIATION

The *P.E.I. Youth Chess Association* is a non-profit organization dedicated to promoting chess for children on Prince Edward Island, Canada. Our executive committee consists of teachers, experienced chess organizers, and "chess parents".

The association runs monthly tournaments throughout the school year in Charlottetown and conducts instructional classes and a summer camp. We also hold tournaments in Summerside. Our biggest event is the *Provincial Scholastic Championship* which determines the 12 members of the P.E.I. team that attends the national finals of the *Canadian Chess Challenge*. One student from each grade qualifies. Each spring we organize a *School Team Championship*.

The association was founded in 1989 by Mike England of Summerside, with the main purpose of organizing the PEI provincial competition for the Chess Challenge.

The PEI YCA is affiliated with the *Chess'n Math Association*, the national scholastic chess organization. In 1999, the association hosted the national finals of the *Canadian Chess Challenge* in Summerside.

PEI YCA EXECUTIVE

President	Jan Giles
Vice President	Tom Crowell
Treasurer	Stacey Kerr
Directors-At-Large	Jeff Coakley Dwayne Doucette Patrick Holland Peter McCallum Laura O'Grady

MAJOR SPONSORS

Lawton's Drugs
Mark's Work Wearhouse
Bell Aliant

VOLUNTEERS

Our association depends on volunteers to be successful. If you are interested in helping in any way, please contact us. There are many organizational tasks which require no chess experience.

Thanks!

HOW TO CONTACT US

Jan Giles PEI YCA president

902 658-2409

peiyouthchess@gmail.com

www.peiyca.ca

REGULAR TOURNAMENTS

Open to all students from kindergarten to grade 12. Everyone plays at least 4 games. Students are divided into 4 or 6 player groups by age and rating.

Prizes for top 3 players in each group (medal with ribbon). New players receive a participation pin. Rated by Chess'n Math Association.

ENTRY FEE: \$10

(\$5 for second player in same family)

REGISTRATION: 12:30 - 12:50 pm

The first round begins at 1 pm. The tournament is over by 4 pm (3 pm for younger children).

CHAMPIONSHIPS *Pre-registration required.*

P.E.I. Chess Challenge February 26

This event qualifies 12 students to the national championship, one in each grade. Players only compete with others in the same grade. To qualify for this event, students in grades 1-4 must have played in at least one PEI YCA tournament since January 2011. Trophies for top 3 in each grade.

Entry fee: \$20

Pre-registration deadline: February 21

Check-in by 12:45 pm on day of event. Games begin at 1 pm. No late entries accepted at tournament site.

School Team Championship April 15

Entry fee: \$30 per team

Pre-registration deadline: April 10.

Teams are four players from the same school.

Four sections by grade: K-4, 5-6, 7-9, 10-12.

Prizes for top 3 teams in each section. Special prize for best team name!

Games begin at 1:00 pm.

MINI-CAMPS *Pre-registration required.*

Open to students from grade 2 to 6. Groups are divided by age and skill. One hour instruction plus 90 minutes of supervised practice and study.

Camp fee: \$10 Hours: 1 - 3:30 pm

CHESS EVENTS FOR KIDS 2011-2012

PRINCE EDWARD ISLAND YOUTH CHESS ASSOCIATION

REGULAR TOURNAMENTS

Charlottetown

**Colonel Gray High School
175 Spring Park Rd.**

**** except Dec.4 Birchwood School**

Sundays

October 16

November 6

December 4 **

January 22

February 12

March 11

CHESS MINI-CAMPS

West Kent School

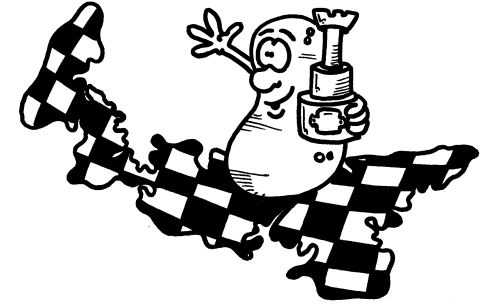
27 Viceroy Ave.

Charlottetown

Saturdays pre-registration required

November 26

January date to be announced



CHAMPIONSHIPS

P.E.I. Chess Challenge

Provincial Scholastic Championship

individual competition by school grade
pre-registration required by February 21

Sunday February 26

**Colonel Gray High School
175 Spring Park Rd.**

(snow date: March 5)

P.E.I. School Team

Chess Championship

four players per team

sections by grade: K-4, 5-6, 7-9, 10-12
pre-registration required by April 10

Sunday April 15

**Birchwood School
49 Longworth Ave.**

For updates to the tournament schedule, see our webpage:

www.peiyca.ca