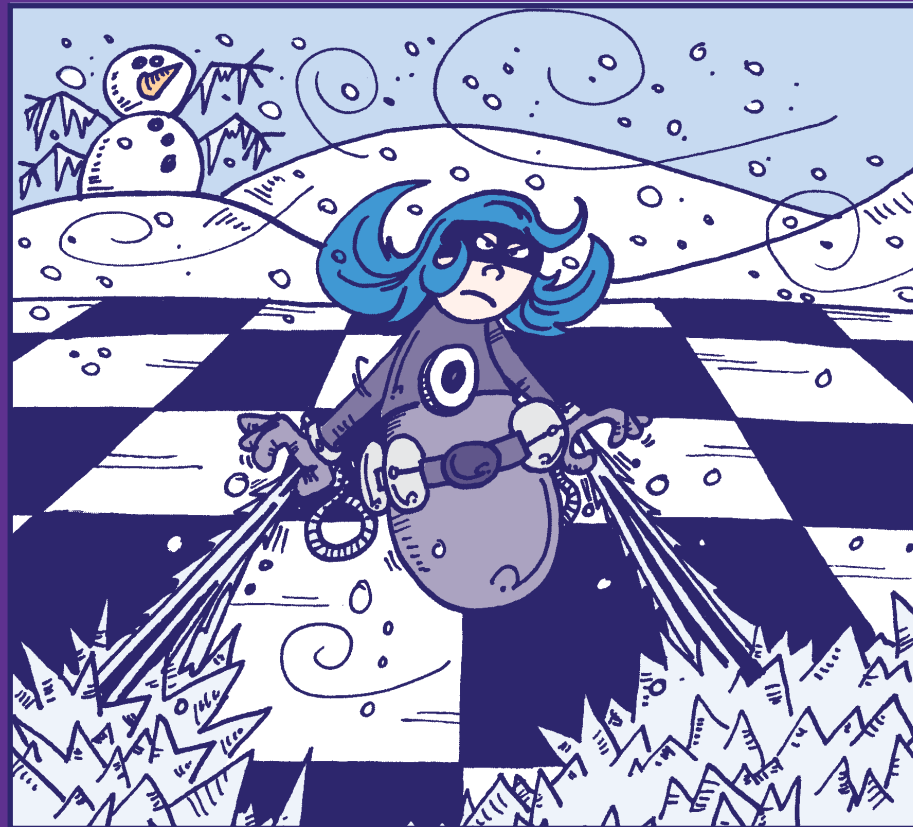


SCHOLAR'S MATE

CANADA'S CHESS MAGAZINE FOR KIDS
MARCH 2017

number 135



EXILE ON THE X-FILE

ICE-O-LANI vs. SPIDERPAWN

QUEEN AND KNIGHT MATES

SCHOLAR'S MATE

Canada's Chess Magazine For Kids

On-line and free!

The **Chess'n Math Association** publishes *Scholar's Mate* four times per year as a **PDF** document. You can read the "e-magazine" on your computer screen or print it out.

The magazine can also be viewed in **DNL** format, with pages that actually turn! A free DNL Reader can be downloaded from the CMA website.

www.chess-math.org

If you have any questions about the magazine, please contact us at:

scholarsmate@chess-math.org

SCHOLAR'S MATE

3423 St. Denis #400

Montreal, Quebec H2X 3L2

EDITOR

Jeff Coakley

Illustrator

Antoine Duff

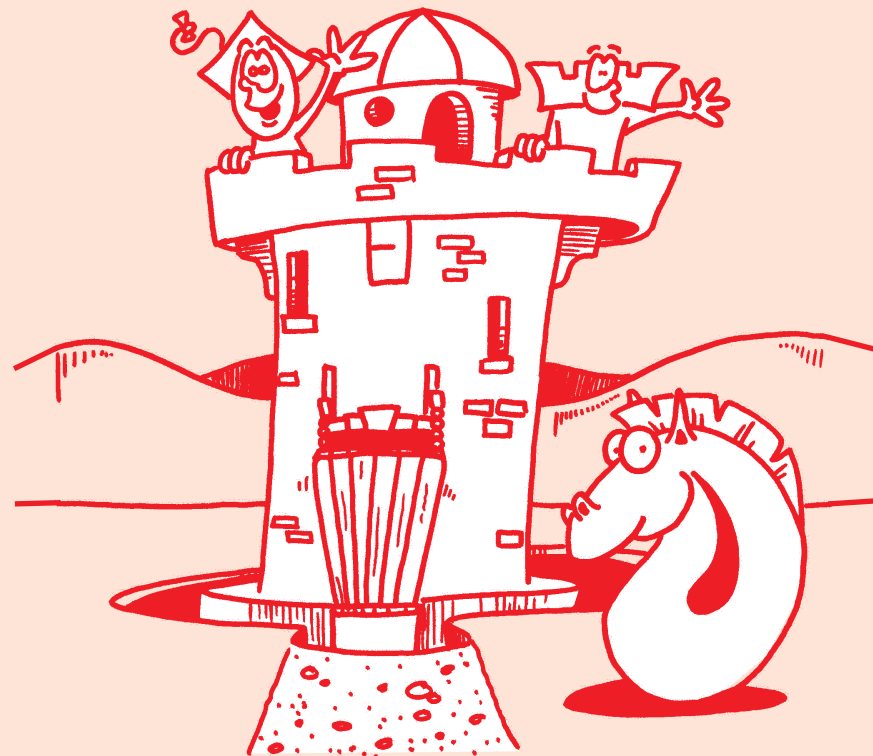


Scholar's Mate is published four times per year by the Chess'n Math Association. Dates of issue : September 15, December 15, March 15, June 15

Reproduction by any means, mechanical or electronic, is forbidden except by permission of Scholar's Mate.

March 2017 (date of issue)

HELLO, CHESS PALS!



Welcome to another issue of Scholar's Mate. Time for more fun and games.

Are you playing in the *Canadian Chess Challenge*? Good luck at the provincials if you are. Maybe we'll see you at the nationals in Toronto.

Here's the mag.

Kiril

SUMMER CHESS CAMPS

TORONTO

July 4 - 7

July 17 - 21

July 31 - August 4

August 14 - 18

Aug. 28 - Sept. 1

Mount Pleasant Church
527 Mount Pleasant Rd.

MONTREAL

July 3 - 7

July 10 - 14

July 17 - 21

August 7 - 11

August 14 - 18

August 21 - 25

Chess'n Math Building
3423 St. Denis

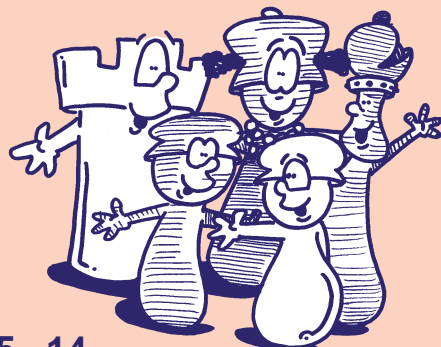
OTTAWA

July 10 - 14

July 24 - 28

August 7 - 11

Parkdale Church
429 Parkdale Ave



OPEN TO AGES 5 - 14

BEGINNERS to RATING 1500

FULL DAYS 9 am to 5 pm

HALF DAYS 9 am-1 pm or 1-5 pm

groups divided by rating and age

FOR MORE INFORMATION AND REGISTRATION FEES

CHESS' N MATH ASSOCIATION

416 488-5506 514 845-8352 613 565-3662

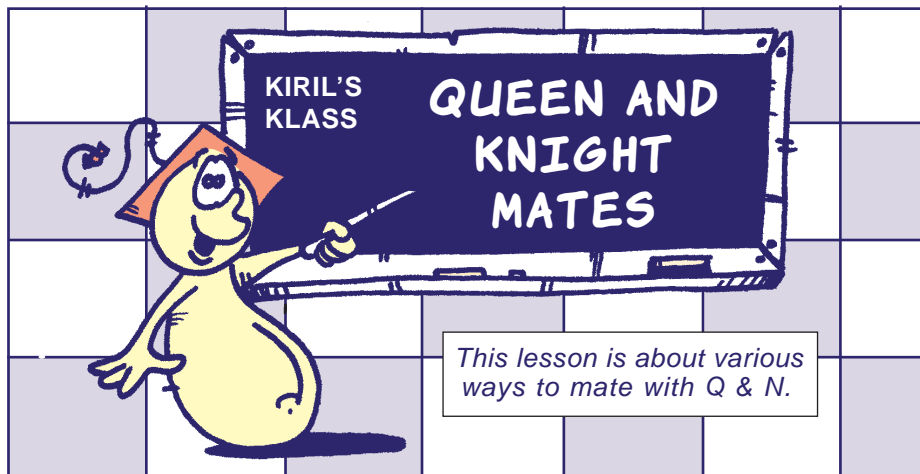
SCHOLAR'S MATE
MARCH 2017 #135



CONTENTS

QUEEN AND KNIGHT MATES	6
Kiril's Klass	
Great Attacking Partners	
PROVINCIAL CHAMPIONSHIPS	16
Canada And World News	
Reports From AB MB PE QC	
EXILE ON THE X-FILE	26
Kiril's Korner	
Ice-O-Lani vs. Spiderpaw	

Summer Camps	4	Lily's Puzzler	23
You Are Here!	5	Kiril's Kontest	24
CCC Info	10	CCC Stats	37
Mort & Marley	11	Maze & Loyd	38
Canada Top Ten	12	Regional Top 10's	40
Tactics 102	13	Ratings	44
Master Profile	14	Top Girls	45
Combo Mombo	15	Tournaments	47
News	16	Links & Contacts	48
Mates	20	Chess Notation	50
Kiril's Address	22	Solutions	51

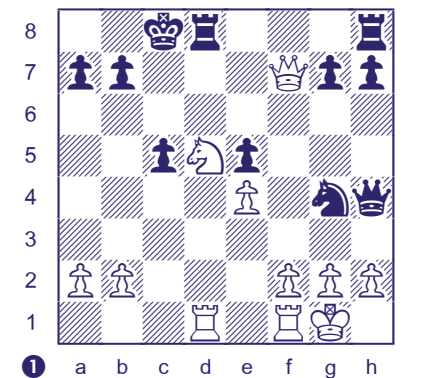


The queen is the most powerful piece. That makes her the best piece for giving checkmate. But usually she can not mate alone. She needs help from at least one other piece. In this class, we look at how queen and knight work together to give checkmate.

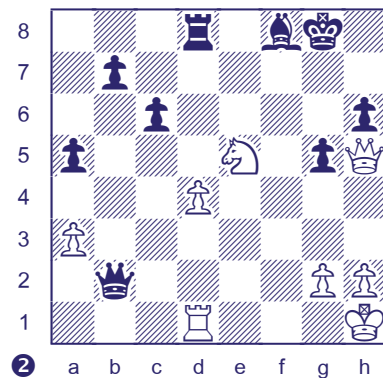
Diagram #1 shows the most common kind of QN mate. The knight guards the queen, and the queen stands next to the opposing king, who is on the side of the board.

With White to move, **Qc7#** is mate. But if it is Black's turn, then **...Qxh2#** is mate. Easy stuff, right?

In diagram #2, after **1.Qf7+! Kh8**, it's the white knight that delivers mate to the cornered king by **2.Ng6#**. Note that Black survives following **1.Qg6+? Bg7**.



1 WHITE OR BLACK TO MATE IN 1



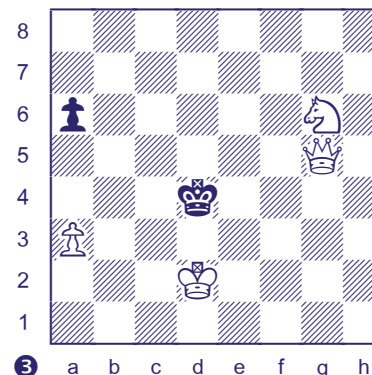
2 WHITE TO MATE IN 2

A queen can move like a rook, bishop, king, or pawn. But she cannot move like a knight. The knight has its own unique way of hopping around the board. This is the reason that queens and knights work so well together. Their moves complement each other.

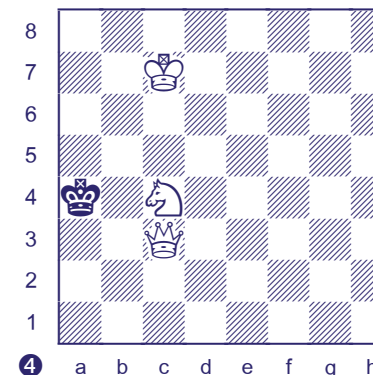
The next two basic examples show how a queen and knight cooperate with their king to mate in the open field.

In diagram #3, White plays **1.Ne7!** Then black has three choices, but none of them stop mate. Take your pick: **1...Ke4** **2.Qe3#** or **1...Kc4** **2.Qd5#** or **1...a5** **2.Qd5#**.

There are lots of ways for White to win in diagram #4, but only one mate in 2. **1.Qa3+ Kb5** **2.Nd6#**. Be careful not to stalemate by **1.Qb2** or **1.Kc6** or **1.Nd6**.

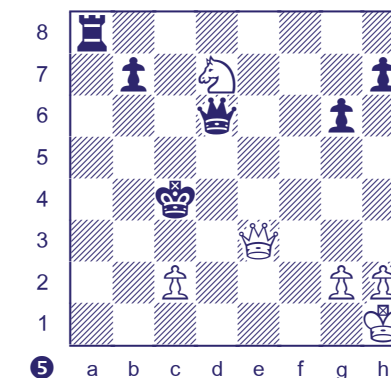


3 WHITE TO MATE IN 2

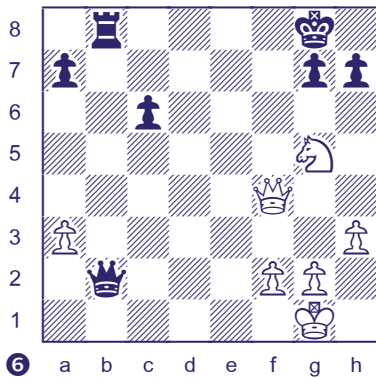


4 WHITE TO MATE IN 2

Can you find a forced mate in diagram #5? (solution page 51)



5 WHITE TO MOVE



6 WHITE TO MATE IN 5

The most famous mate with queen and knight is called “Philidor’s legacy”, named for French master François-André Danican Philidor (1726-1795).

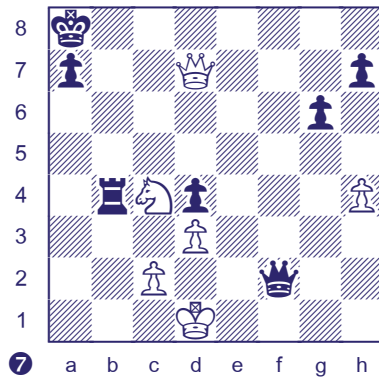
Diagram #6 shows how it’s done. First a queen check. **1.Qc4+!** There is instant mate after **1...Kf8 2.Qf7#**, so the black king goes to the corner. **1...Kh8 2.Nf7+ Kg8**. Then a fancy double check, **3.Nh6+! Kh8**, following by a cool queen sacrifice **4.Qg8+! Rxc8**, and glory for the knight with **5.Nf7#**. The king, surrounded by his own pieces, is in a *smothered mate*.

The roles are reversed in diagram #7. This time the knight is sacked and the queen gives mate. **1.Qc8+ Rb8 2.Nb6+!**, forcing a fatal capture. **2...axb6 3.Qa6#**

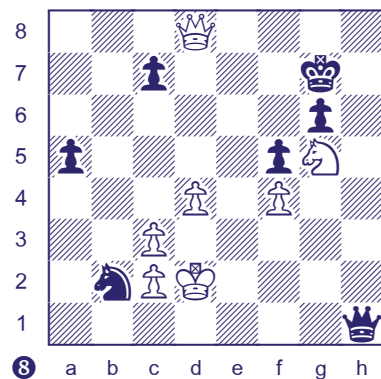
In many mates with Q and N, the queen can be replaced by a rook. See *Scholar’s Mate 117* for a class on R and N mates.

Diagram #8 comes down to a single tempo. Whichever side moves forces mate.

White plays **1.Qe7+**, leaving Black three unpleasant options: **1...Kh6 2.Qh7#**, **1...Kh8 2.Qf8#** and **1...Kg8 2.Qf7+ Kh8 3.Qf8#** (not **3.Qh7+? Qxh7**).

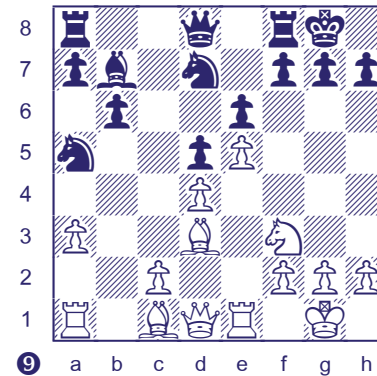


7 WHITE TO MATE IN 3



8 WHITE OR BLACK TO MOVE

Things are trickier with Black to move. The fun starts with **1...Nc4+**. Surprisingly, it’s “game over” after **2.Kd3 Qe1#**, so White plays **2.Ke2**. Black continues **2...Qg2+**, when there is mate in 1 if Black goes to the d-file (**3.Kd1 Qd2#** or **3.Kd3 Qe1#**). Following **3.Ke1**, the king gets chased down by **3...Qd2+ 4.Kf1 Ne3+ 5.Kg1 Qg2#**.

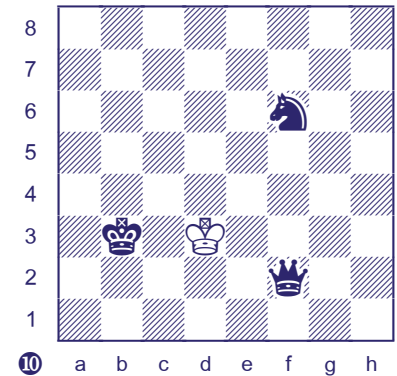


9 WHITE TO MOVE

White has a great attacking position in #9. The pawn at e5 is especially strong, keeping black pieces off f6. White crashes through with a bishop sacrifice known as the “Greek gift”. **1.Bxh7+! Kxg8** Black is also in trouble following **1...Kh8 2.Ng5** (**2...Rc8 3.Qh5** or **2...g6 3.Qg4**).

After **2.Ng5+**, Black loses easily by **2...Kh8 3.Qh5+ Kg8 4.Qh7#** or **2...Kh6 3.Nxe6+**. A little bit tougher is **2...Kg6 3.Qd3+! f5 4.exf6+ e.p. Kxf6 5.Rxe6#** (or **3...Kh6 4.Qh7#**). The usual move is **2...Kg8** when White plays **3.Qh5!**, threatening mate on h7. The only reasonable defence then is **3...Re8**, but White still wins by **4.Qxf7+!** (better than **4.Qh7+ Kf8**) **4...Kh8 5.Qh5+ Kg8 6.Qh7+ Kf8 7.Qh8+ Ke7 8.Qxg7#**.

Let’s finish off with one more problem for you to solve (#10). It’s Black to move. (solution page 51)



10 BLACK TO MATE IN 2



So long!

CANADIAN CHESS CHALLENGE



2017 National Scholastic Championship

The Chess'n Math Association, Canada's national scholastic chess organization, is proud to announce the 29th annual Canadian Chess Challenge. We hope that you and your friends can take part this year.

The competition is played in three stages: regional, provincial, and national. The finals will take place on Victoria Day weekend in Toronto, Ontario.

For information on how to enter the Canadian Chess Challenge, contact your provincial coordinator.

Alberta

Vlad Rekhson
vrekhsn@yahoo.ca

PROVINCIAL COORDINATORS

Nova Scotia

Stirling Dorrance
(902) 678-4453

British Columbia

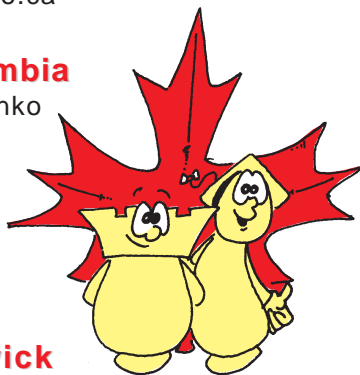
Maxim Doroshenko
(604) 568-3283

Ontario

Leslie Armstrong
(905) 841-1342

Manitoba

Jeremie Piche
(204) 237-1497



Prince Edward Is.

Aaron Rainnie
(902) 658-2409

New Brunswick

Pierre Lambert
(506) 863-4821

Quebec

Maria Manuri
(514) 721-2326

Newfoundland

Chris Dawson
(709) 747-5217

National Office

3423 St. Denis #400
Montreal, Quebec
H2X 3L1
(514) 845-8352

Saskatchewan

Lauri Lintott
(306) 924-5881

MORT AND MARLEY



Hey, Mort. It's great to be here on the same page with the amazing Spiderpaw.

Yea, Marley, but this isn't what I thought he meant when he asked if we wanted to hang out for a while.



CANADA TOP TEN



KINDERGARTEN

1	IVANESCU Matthew	734	AB
2	WANG Arthur	660	ON
3	LOU Aaron	592	QC
4	VICKERS Aaron	578	BC
5	JIANG William	564	BC
6	HE Wei	548	ON
7	YU Michael	522	QC
8	SORGARD William	494	SK
9	KE Lynn	493	QC
10	WU Nicholas	482	BC

GRADE 1

1	GUO Richard	931	ON
2	POMPAS Codrin	875	BC
3	MANE Arnab	833	ON
4	CHEN Alina	808	ON
5	BAI Kingsley	791	ON
6	ZINCHENKO Anthony	746	ON
7	LEBLANC Zachary	699	NB
8	LI Max	677	ON
9	LING Kathryn	672	ON
10	GEORGESCU Luca	660	QC

GRADE 2

1	YANG Ryan	1415	BC
2	SONG Ethan	1283	BC
3	WANG Nathan	1214	ON
4	HUARD Matheo	1140	QC
5	GAO Lucy	1097	ON
6	YAN Alex	1072	QC
7	LI James	1012	QC
8	LIU Eric	958	QC
9	QU Greta	957	ON
10	SCHWARTZ Elazar	918	MB

GRADE 3

1	ATANASOV Anthony	1722	ON
2	ZHONG Kevin	1579	QC
3	WU Nathan	1531	BC
4	WANG Daniel	1441	BC
5	CHANG Alexander	1324	QC
6	LI Adam	1319	ON
7	QIU James	1296	ON
8	OFFENGENDEN Ron	1289	AB
9	WANG Kaison	1276	ON
10	YU Sophia	1250	BC

GRADE 4

1	GUIPI BOPALA Prince	1889	QC
2	ZHENG Richard	1725	QC
3	CHEN Max	1660	ON
4	ZHAO Jeffrey	1562	ON
5	ZHANG Chuhang	1381	QC
6	DINATOLO Zack	1349	ON
7	LIU Kevin	1320	QC
8	GHAZARIAN Tigran	1307	ON
9	XU Andrew	1290	BC
10	SHAPIRO Idan	1278	ON

GRADE 5

1	ISSANI Nameer	2219	ON
2	NOORALI Aahil	1994	ON
3	JEYAKUMAR Bhavatharshan	1692	ON
4	GU Chuyang	1691	BC
5	RUSONIK Max	1684	ON
6	WU Lucian	1680	BC
7	ZHOU Aiden	1584	BC
8	SHEN Isamel	1502	ON
9	OMICHI Haruaki	1469	QC
10	FEDYUSHCHENKO Alexander	1443	ON

GRADE 6

1	HUANG Qiuyu	2215	QC
2	LOW Kevin	1879	BC
3	HUANG Patrick	1838	BC
4	ENGLAND Max	1747	ON
5	DOKNJAS Neil	1724	BC
6	TANAKA Tyler	1684	QC
7	SUPERCEANU Andi	1661	AB
8	TIAN Sherry	1660	BC
9	ZHAO Jonathan	1577	ON
10	JAMES Rowan	1547	BC

GRADE 7

1	VETTESE Nicholas	2302	ON
2	RODRIGUE-LEMIEUX Shawn	2259	QC
3	DURETTE Francis	2210	QC
4	HEMSTAPAT Andrew	2137	BC
5	ZHONG Wenxuan	1948	QC
6	QU Leo	1802	BC
7	LI Alan	1727	ON
8	ZHENG Victor	1714	BC
9	LIN Benjamin	1659	ON
10	MIRABELLI Aidan	1600	ON

GRADE 8

1	HUA Eugene	2295	ON
2	NORITSYN Sergey	2262	ON
3	TALUKDAR Rohan	2246	ON
4	DEMCHENKO Svitlana	2086	ON
5	MING Wenyang	1930	ON
6	PULFER Luke	1900	BC
7	LOW Ethan	1827	BC
8	WANG Kaixin	1797	AB
9	TINICA Gabriel	1732	QC
10	BU Kevin	1730	PE

GRADE 9

1	OUELLET Maili-Jade	2224	QC
2	DOKNJAS Joshua	2222	BC
3	FAN Run Kun	2074	QC
4	GROSSMANN Lenard	1912	AB
5	ZHAO Yue Tong	1859	ON
6	CAI Jason	1843	ON
7	YAO David	1838	AB
8	SU Michael	1828	BC
9	LEONG Ryan	1797	BC
10	YIE Kevin	1796	ON

GRADE 10

1	CHEN Richard	2402	ON
2	WAN Kevin	2356	ON
3	GEDAJLOVIC Max	2338	BC
4	ZHANG Yuan Chen	2325	ON
5	ZOTKIN Daniel	2240	ON
6	ZHAO Harry	2225	ON
7	XU Jeffrey	2096	ON
8	BALENDRA Harigaran	2093	ON
9	SAHA Ananda	2090	QC
10	SHAMRONI Dennis	2041	ON

GRADE 11

1	CAO Jason	2415	BC
2	BELLISSIMO Joseph	2373	ON
3	SONG Sam	2359	NB
4	ZHOU Qiyu	2344	ON
5	LEI Sean	2220	ON
6	YU Wenlu	2205	ON
7	WANG Eric	2104	ON
8	ZHONG Joey	2091	ON
9	ZHU Brandon	1859	BC
10	KASSAM Jamil	1854	AB

GRADE 12

1	PREOTU Razvan	2658	ON
2	YU Zong Yang	2537	QC
3	SONG Michael	2531	ON
4	CHIKU-RATTE Olivier Kenta	2513	QC
5	AWATRAMANI Janak	2466	BC
6	SHI Diwen	2348	AB
7	DOKNJAS John	2292	BC
8	ZHU Hong Rui	2240	QC
9	LI Yinshi	2239	ON
10	LIU Yu Qing	2181	QC

HONOUR ROLL

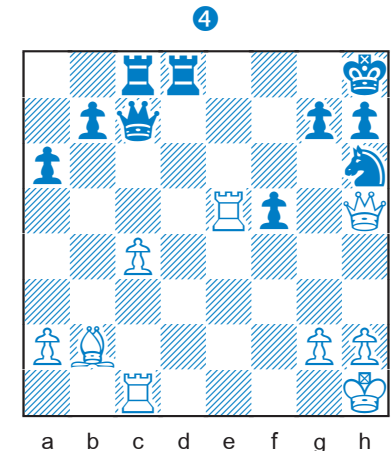
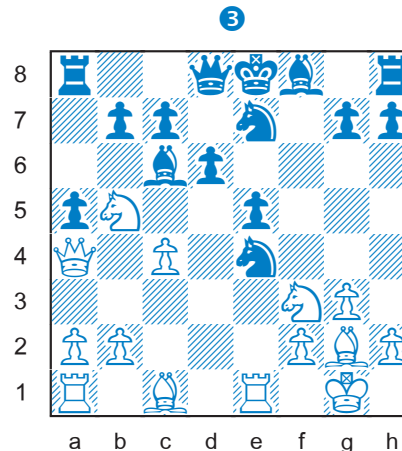
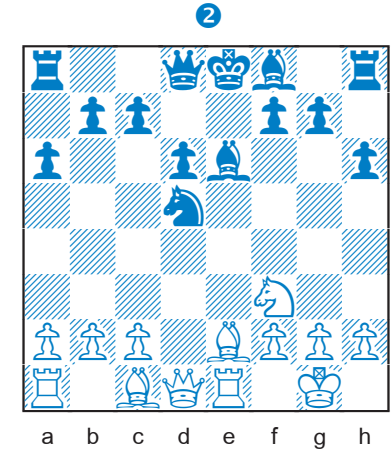
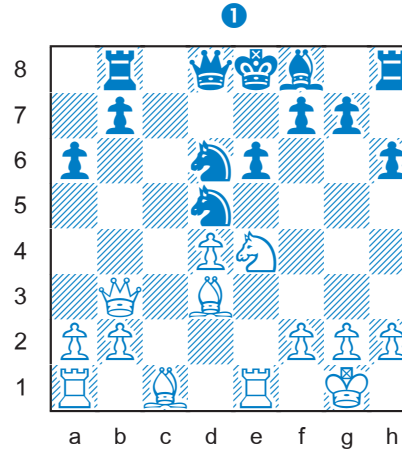
1	PREOTU Razvan	2658	ON
2	YU Zong Yang	2537	QC
3	SONG Michael	2531	ON
4	CHIKU-RATTE Olivier Kenta	2513	QC
5	AWATRAMANI Janak	2466	BC
6	CAO Jason	2415	BC
7	CHEN Richard	2402	ON
8	BELLISSIMO Joseph	2373	ON
9	SONG Sam	2359	NB
10	WAN Kevin	2356	ON

TACTICS 102

"TAKE AND DOUBLE CHECK!"

White to play and win material.

solutions page 51



BORIS SPASSKY

(1937 -)

This popular Russian grandmaster from Saint Petersburg won the World Junior Championship at age 18. In 1969 he became the tenth world chess champion by defeating Tigran Petrosian 12½-10½ in Moscow.



“The secret of chess: You must know the rules and you must know when to break them.”

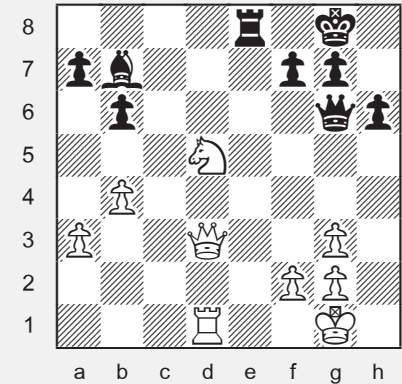
SPASSKY VARIATION (Nimzo-Indian Defence)

1.d4 Nf6 2.c4 e6 3.Nc3 Bb4 4.Bg5

Spassky is known for his “universal style”. That means that he plays well in any kind of position. But he is probably most famous for his loss to Bobby Fischer in their 1972 title match in Iceland. The rematch in 1992 earned him 3 million dollars. Spassky left the Soviet Union in 1976 and became a citizen of France, returning to Russia in 2012.

COMBO MOMBO !!

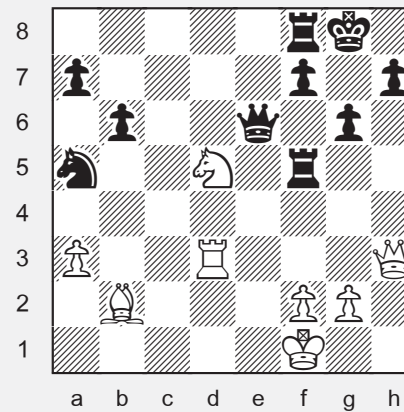
SPOTLIGHT ON DEFLECTION



A *deflection* is a sacrifice which forces an opposing piece to move and give up its defensive job.

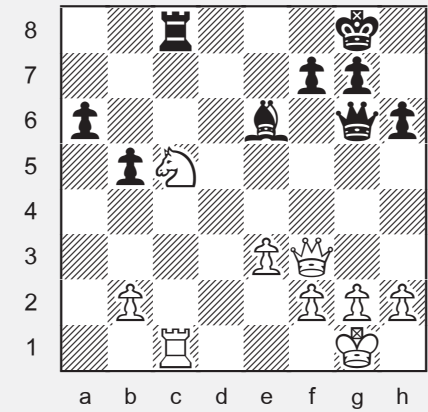
♔ White forks with 1.Ne7+!, sacrificing the knight to deflect the black rook. After 1...Rxe7 2.Qd8+ Kh7 3.Qxe7, White is up the exchange. (1...Kh7? Nxg6)

♚ Black to move deflects the white rook from its defence of the queen by 1...Re1+! It's game over for White following 2.Rxe1 Qxd3 or 2.Kh2 Qh5#.



♔ **WHITE TO MOVE**
Win Material

solutions page 51



♚ **BLACK TO MOVE**
Win Material



CANADA AND WORLD NEWS

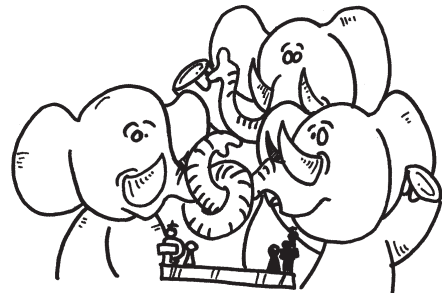


QUEBEC YOUTH

The 2017 Quebec Youth Chess Championships took place on March 3-5 in Montreal, with 62 participants in the five round event. Here are the champions and runners-up.

<8 Eric Liu	5
Matheo Huard	4
James Li	3
L. Georgescu-Nicolau	3
<10 Kevin Zhong	4½
Alexander Chang	4
Prince Guipi Bopala	4
<12 Richard Zheng	4½
David Craciun	4
Daniel Yu	4
<14 S. Rodrigue-Lemieux	4
Qiuyu Huang	3½
Francis Durette	3½
<16 Yoakim Turgeon	4
Maili-Jade Ouellet	4
M. Johnson-Constantin	3
<18 HongRui Zhu	5½
Ananda Saha	4
Yi Lin Li	2½

(Under 18 was 6 rounds.)



ALBERTA YOUTH

The 2017 Alberta Youth Chess Championship was held at the Radisson Hotel in Edmonton on February 25-26 with 66 players.

The provincial champions are:

<8 Anand Chandra
<10 Felix Lin
<12 Ian Zhao
<14 Kaixin Wang
<16 Jeff Wang
<18 Diwen Shi

CALGARY YOUTH

The 2017 Calgary Youth Chess Championships were played on January 28 at the Calgary Junior Chess Club with 64 participants.

The new city champions are:

<8 Anand Chandra
<10 Ricky Chen
<12 Ian Zhao
<14 Andrew Xu
<16 Andre Tolentino
<18 Ali Parsae

CANADIAN UNIVERSITIES

This year's Canadian University Chess Championship was held at Western University in London, Ontario on January 14-15 with twenty-four teams. The winner for the second year in a row was the University of Toronto, led by Christopher Knox, who won all five of his games.

MONTREAL TEAMS

There were 214 players on 56 teams at the Montreal Scholastic Team Tournament on February 26th at Jean de Brebeuf College. Congratulations to Fernand-Seguin for placing first in both sections. The top three schools in each group were:

K-3
1. Fernand-Seguin
James Li
Kenneth He
Toma Lafontaine
Annie Li
2. St-Barthelemy
3. Buissonniere

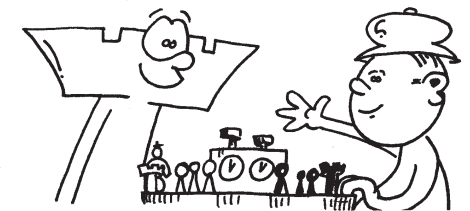
K-6
1. Fernand-Seguin
Qiuyu Huang
Yihan Xu
Le Cong Li
Leonard Cuptor
2. The Priory
3. Roslyn



QUEBEC GIRLS

The Quebec Junior Girls Chess Championship was played in Montreal on February 10-12. The winner, after a playoff, was 9th grader Maili-Jade Ouellet. Yi Lin Li came second, with Allison Tsy-pin and Rachel Wang tying for third.

The victory qualifies Maili-Jade to the Susan Polgar Invitational in St. Louis this July. Her airfare will be paid for by Chess'n Math.



TORONTO GRAND PRIX

There were 171 players at the second Grand Prix tournament in Toronto on February 12. Five of them scored perfect 5-0's: Max Chen, Anthony Atanasov, Jonathan Zhang, Greta Qu, and Nathan Wang. The third and final event, sponsored by the Chess'n Math Association, is scheduled for May 7. The total prize fund is \$3000 in gift certificates.



NEW YORK

Thirty-eight Quebec students took part in the *2017 New York State Scholastic Championship* at Saratoga Springs on March 11-12. The trip was arranged by the *Chess'n Math Association*.

There was a total of 1151 players in the six round tournament, which was divided into eleven sections. The Quebec players who finished in the top ten, winning trophies, are listed here:

- Shawn Rodrigue-Lemieux (5 points, 7th place, high school)
- Olivier Kenta Chiku-Ratte (4½ points, 10th place, high school)
- Tyler Tanaka (5 points, 2nd place, K-6)
- Leo Richard (5 points, 6th place, K-6)

Others with a positive score in the championship sections were:

- | | |
|-------------------------|--------------------------|
| <i>high school</i> | <i>elementary</i> |
| Maili-Jade Ouellet (4½) | David Craciun (4½) |
| Ananda Saha (4) | Prince Guipi Bopala (3½) |
| <i>junior high</i> | <i>primary</i> |
| Francis Durette (4) | Richard Bocan (4) |
| Gabriel Tinica (4) | Alex Yan (4) |

WOMEN'S WORLD

The new women's world champion is 25 year old Tan Zhongyi of China. She won the 64 player knockout tournament held at Tehran, Iran in February, defeating Anna Muzychuk (Ukraine) in the final match.

Tan Zhongyi was the world girls under 10 champion in 2000 and 2001, and the under 12 champion in 2002.

Last year's champion Hou Yifan did not participate. Several top players refused to play because of the way women are treated in Iran and the requirement to wear a headscarf.

Canadian champion Qiyu Zhou (Ottawa) was eliminated in round 1.



TAN ZHONGYI

PRINCE EDWARD ISLAND

There were 55 players at the *Prince Edward Island Provincial Chess Challenge* on February 26 in Charlottetown. This year's grade champions are:

- 1 Sam Wang
- 2 Leon Liang
- 3 Phu Vo
- 4 Luke Dickie
- 5 An Vo
- 6 Tony Wu
- 7 Arnab Kundu
- 8 Kevin Bu
- 9 Joey Zhou
- 10 SoumyaDeep Chowdhury
- 11 Jack Ronahan-Wood
- 12 Alan Huang



Team PEI

MANITOBA

The *Manitoba Provincial Chess Challenge* was held March 12. Congratulations to the winners in each grade.

- 1 Yuzhou Lin
- 2 Elazar Schwartz
- 3 Zachary Piche
- 4 Martin Riquelme
- 5 Diana Furda
- 6 Max Russo
- 7 Carter Marshall
- 8 Ethan Eckert
- 9 Derek Ma
- 10 Ethan Lin
- 11 Brock Beach
- 12 Mathis Penner

PROVINCIALS

Here are the dates for the other provincial championships of the *Canadian Chess Challenge*.

Newfoundland	March 18
Nova Scotia	March 26
Saskatchewan	April 1
British Columbia	April 2
Alberta	April 8
New Brunswick	April 22
Ontario	April 23
Quebec	April 30

The nationals finals will be held in Toronto on May 21-22



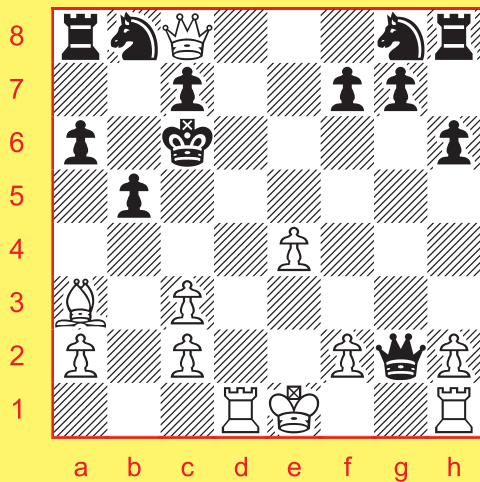
CHECKMATES



WHITE TO MOVE

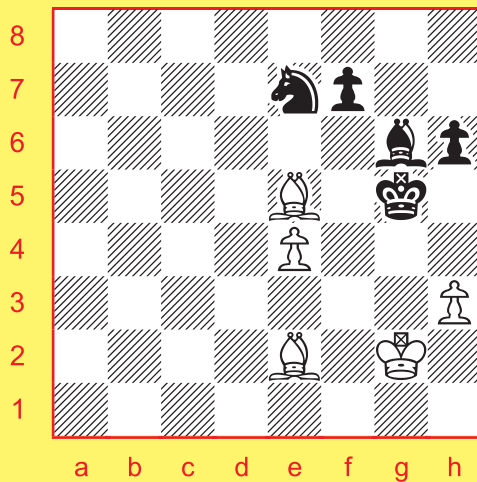
solutions page 51

1



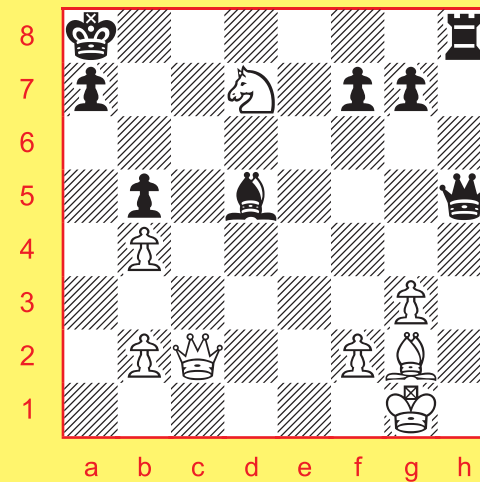
MATE IN 1

2



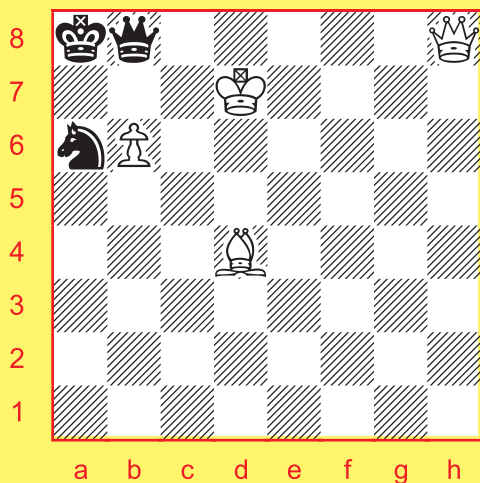
MATE IN 2

3

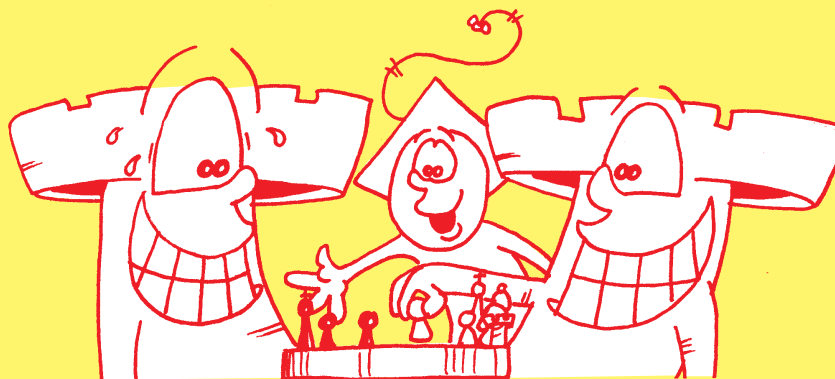


MATE IN 2

4

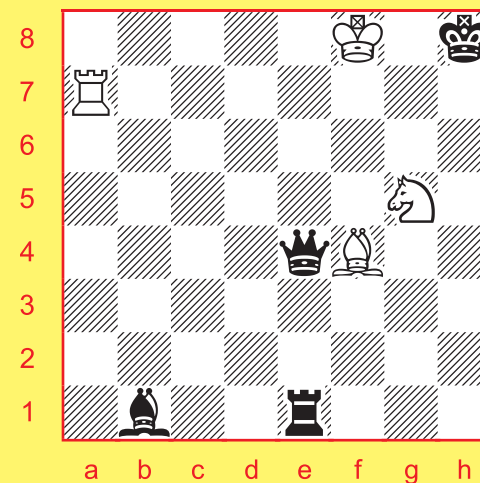


MATE IN 2



"Wow! Nice move."

5



MATE IN 3

CHESS'N MATH ASSOCIATION

*Canada's National Scholastic
Chess Organization*

visit our website for information on

TOURNAMENTS

CLASSES

CAMPS

RATINGS

**ON-LINE CATALOGUE
OF BOOKS AND EQUIPMENT**

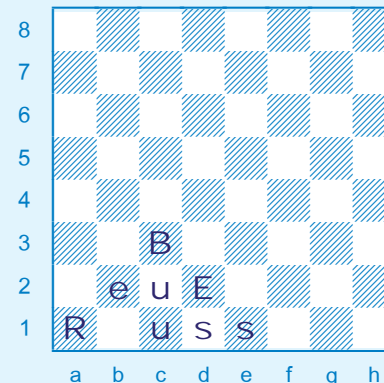
www.chess-math.org

Check it out!

LILY'S PUZZLER

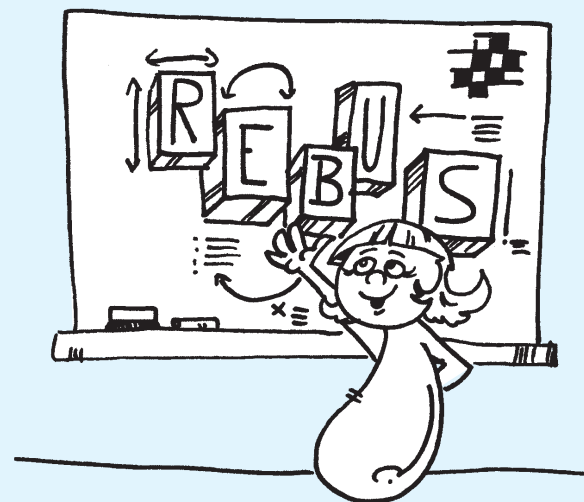
Hi boys and girls!

This kind of puzzle is called a "chess rebus". The diagram has letters instead of pieces. It's easy to see what they spell. But what pieces do they stand for?



solution pages 46 & 51

Each letter is a different kind of piece. For example, maybe E's are pawns and S's are queens. The capital letters are one colour (white or black) and the small letters are the other colour. Figure out all the pieces and what the last move was. The position must be legal (reachable in an actual game).



**HEY, FRIENDS!
I'VE GOT E-MAIL.**

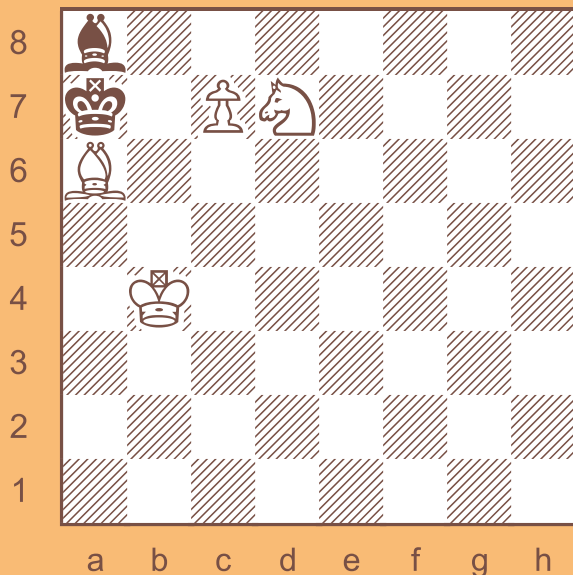
You can write me a letter
or enter my contest at:

kiril@chess-math.org



KIRIL'S KONTEST

1



MATE IN 2

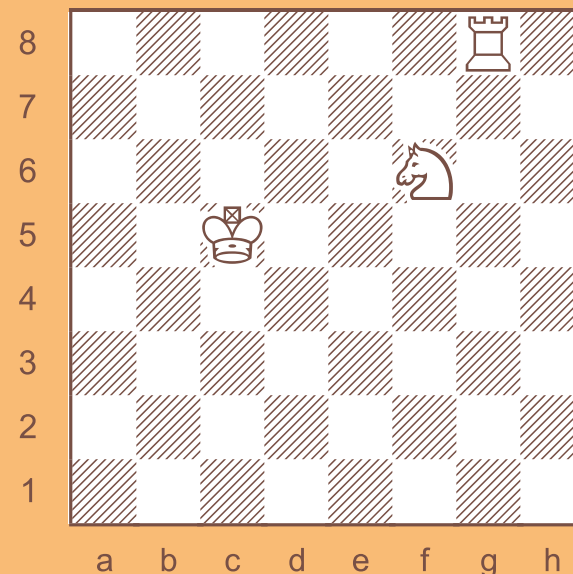
White to play.
Force checkmate
in two moves.

2



Can you solve these puzzles?

Send in your answers and
maybe you will win the contest.
The prize is a chess tuque, just
like the ones we're wearing.



TRIPLE LOYD

Place the black king so that:
A. Black is in mate.
B. Black is in stalemate.
C. White has mate in 1

Enter the contest by mailing your solutions to:

kiril@chess-math.org

Deadline: May 15, 2017

One lucky person will win the drawing for a
"chess tuque" (navy blue acrylic pullover cap
with an embroidered knight insignia).

There were 4 correct entries for December's contest.

1 Mate in 2 1.Rxg6+ Kf8 2.Qd8#
1...Kh7 2.Qh5#

2 Triple Loyd A.Ke4# B.Ka4= C.Kc4 (Rc3#)

The winner of the drawing for a chess tuque is:

Carter Marshall of Winnipeg, Manitoba



EXILE ON THE X-FILE

This is a tale of loneliness and woe. About a young pawn named Lani and the sad life she came to know.

Lani was no ordinary girl. She was born with a special power. She could freeze things with a touch of her hand. Nobody knew how it happened. Nobody knew a cure. Hers would be the coldest of worlds.

And cold began at home. Lani's parents could not afford to pay the heating bill. So they shipped her off to a boring school for gifted children. She grew up like an orphan, and learned to live without love.

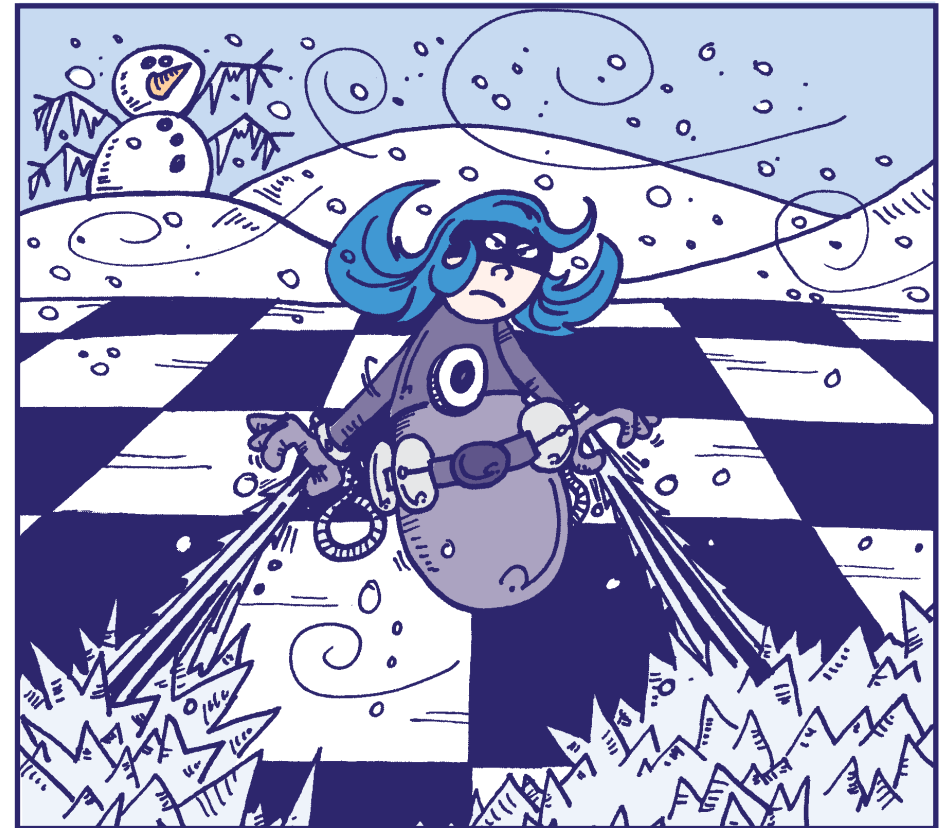
Luckily, Lani was a clever pawn. In science class, she invented a device to control her superpower. With a nifty belt and wristbands, she was able to project and aim her freezing touch. But this only led to more problems, when she practised her skills on the other students.

Though there was a positive side. Chilled out Johnny and frost face Bonnie would definitely think twice before they called her a freak again!



Lani's life at school was miserable. She often dreamt about leaving. And then one night she did. Lani ran away, looking for freedom and hoping for warmer days.

Trouble followed her. So did the authorities. When they finally caught her, the courts sentenced Lani to exile. She was banished to the farthest region of the chessboard, the X-file. Cold dismal isolation.



Time passed. Lani lived alone and her heart grew colder with each wintery day. But she mastered her powers and eventually planned an escape. She also gave herself a new name: ICE-O-LANI!

That wasn't all. She had a new look. A flashy costume in shades of purple, a lovely match to her naturally blue hair. And for that extra sense of mystery: a dark mask.

When Ice-O-Lani was ready to go, it only took a moment to freeze the security system that kept her prisoner. Once she left the X-file, she headed back to civilization. That was bad news for the folks in Chesstown.

She showed no mercy to her opponents, winning every game she played. Anybody who came close to beating her was instantly iced with a beam of frost. It's hard to make good moves when you're shivering to the bones.



The authorities gave up trying to catch Ice-O-Lani. She was usually two or three steps ahead of them and her trail was always cold. For better or worse, she was free.

Weeks went by, and things continued to go Ice-O-Lani's way. Until one day she went too far.

She was playing Biff the B and somehow he got a great position. That was bad strategy against Ice-O-Lani. She gave him a chill, but he didn't make a mistake. Then she hit him again double strength. Biff had no idea what he was doing, but he kept making lucky moves. So Ice-O-Lani let him have it, full blast. Poor Biff was left standing in a block of ice. Totally frozen.

This was too much for the folks of Chesstown to bear. Someone had to do something. And that someone was the hero of our story. SPIDERPAWN!



Like a fierce wind down Central Avenue, across the snow-covered rooftops, Spidey swung into action.

It didn't take long to locate the villain. The slick and slushy streets were mostly deserted. But it was perfect weather for an afternoon stroll by the *Queen of Cold*, the cool and cruel Ice-O-Lani. Spiderpaw slid in beside her, smiled through his mask, and greeted his foe politely. "Hello, friend, how about a game of chess?"

Lani turned a cold shoulder, gave him an icy stare, then warmed up just enough to say, "Okay, sure."

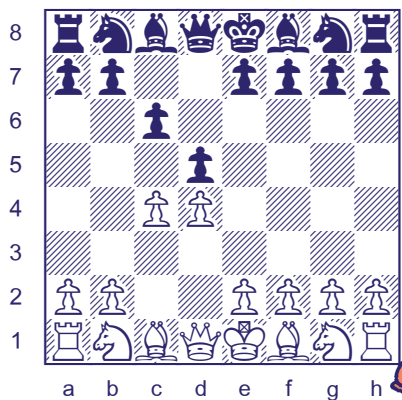
White ICE-O-LANI
Black SPIDERPAWN

A battle of superpowers.

1. d4 d5
2. c4

Lani's favourite opening, the *Queen's Gambit*.

2. ... c6



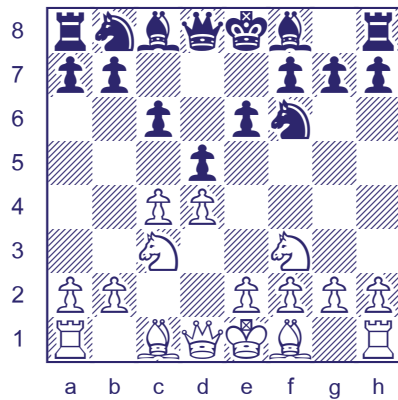
Spidey declines the gambit with the *Slav Defence*.

3. Nf3 Nf6
4. Nc3

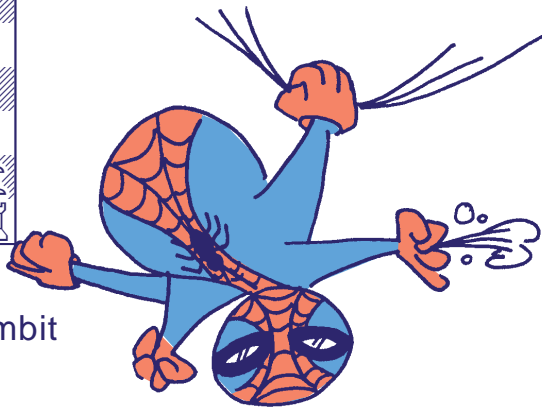
Both players develop their knights towards the centre.

4. ... e6

This move makes the game a *Semi-Slav*. A normal Slav goes 4...dxc4 5.a4! Bf5 (or 5.e4 b5 6.e5 Nd5 7.a4 e6 8.axb5 Nxc3 9.bxc3 cxb5).



Black blocks in the bishop on c8 but threatens to take and keep the gambit pawn by 5...dxc4 and 6...b5.



5. e3

Safely protecting c4. Now 5...dxc4 is easily answered by 6.Bxc4.

After 5.Bg5, things can get wild if Black plays 5...dxc4. For example, 6.e4 b5 7.e5 h6 8.Bh4 g5 9.Nxg5!? hxg5 10.Bxg5 Nbd7.

5. ... Nbd7

6. cxd5

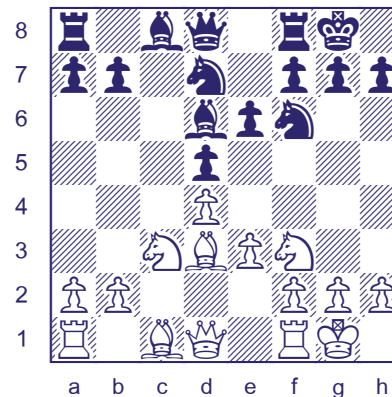
Against 6.Bd3, Spidey was planning the *Meran System* with 6...dxc4 7.Bxc4 b5.

6. ... cxd5

More common is 6...exd5, opening a diagonal for the queen bishop. The game is equal following 7.Bd3 Bd6 8.0-0 0-0 9.Qc2 Re8.

7. Bd3 Bd6

8. 0-0 0-0



No surprises yet. Bishops are developed. Kings are castled.

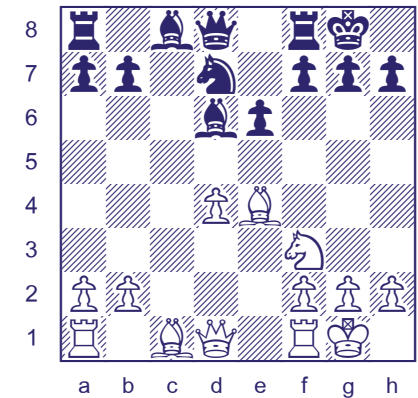
9. e4!?

Lani is ready to fight and plays to open the centre. The threat is a pawn fork by 10.e5.

9. ... dxe4

10. Nxe4 Nxe4

11. Bxe4



A pair of exchanges makes the situation clearer.

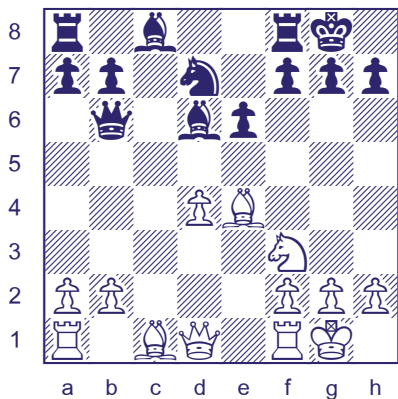


White has an isolated pawn on d4. In the middlegame, this "isolani" is a strength because it helps to control the centre and gives White more space. However, in an endgame, it becomes a weakness because it can't be guarded by other pawns.

So the strategy for each side is easy to understand. White will aim to keep the game complicated and go for an attack. Black will try to simplify into an ending.

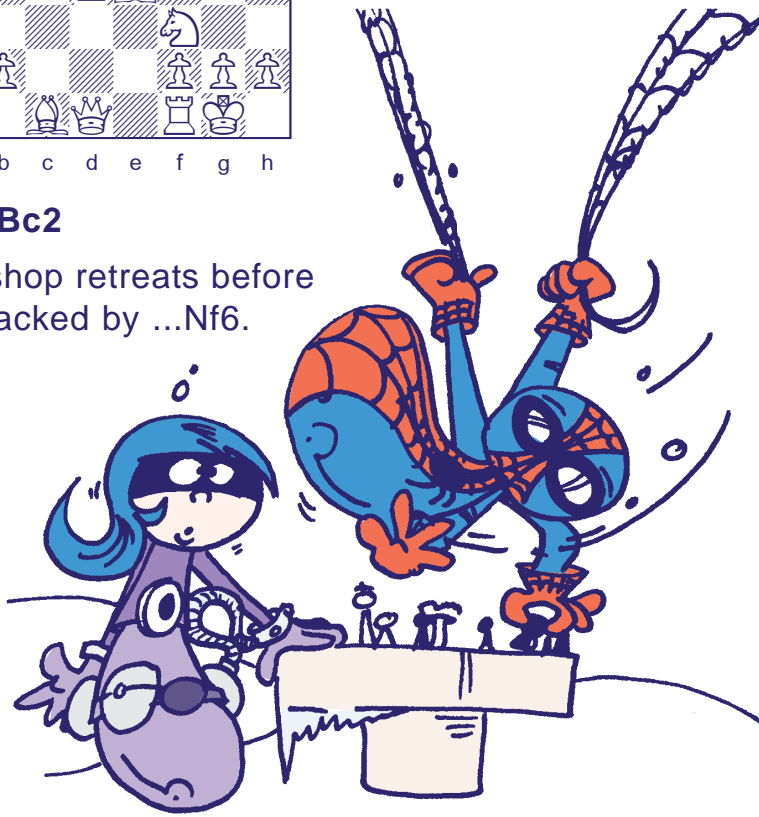
11. ... Qb6

Better than 11...Nf6 which allows a pin by 12.Bg5.



12. Bc2

The bishop retreats before it is attacked by ...Nf6.



12. ... Nf6

13. Qd3

Ice-O-Lani has a plan and a dream. Checkmate on h7!

13. ... Bd7

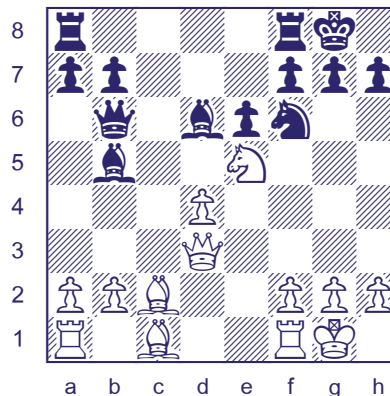
Spiderpaw finally develops the bishop, freeing his rook on a8 and threatening the x-ray attack 14...Bb5.

14. Ne5?!

A bold move, but not good against accurate defence. Better is 14.Re1.

14. ... Bb5!

Skewering queen and rook. On 15.Nc4, Black gets the advantage with 15...Bxh2+! (16.Kxh2 Qc7+ 17.Kg1 Bxc4 18.Qc3 Rac8)



15. Qh3!?

A cold-blooded trap by the Queen of Cold. Amazingly, Black loses if he takes her rook!

Spidey was just about to fall for it when his spider sense started to tingle.

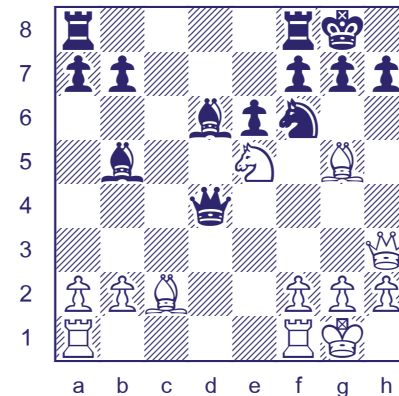
“Uh-oh, I must be missing something.”

15. ... Qxd4!

And right he was. After 15...Bxf1? 16.Nd7!, White will either win the queen or force mate. 16...Qxd4 17.Nxf6+ Qxf6 18.Qxh7# (or 16...Nxd7 17.Qxh7#)

16. Bg5

The threat is 17.Bxf6 gxf6 18.Qxh7#.



Ice-O-Lani was worried that her opponent had survived this long. So, with a flick of the wrist, she zapped him with a cool ray.

His spider suit was well insulated, but our hero still felt the chill, and decided to get some extra protection. In a flash, he swung off to a neighbourhood store, and quickly returned, in mittens and tuque.

16. ... Qxe5

Once again, 16...Bxf1? is an awful blunder. 17.Bxf6!

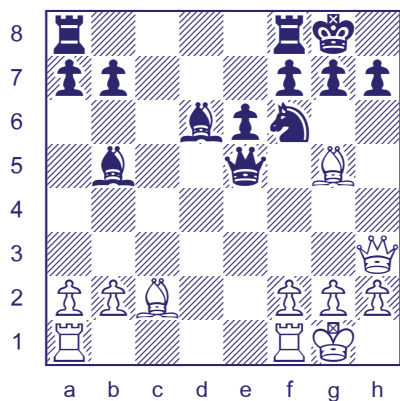
17...gxf6 18.Qxh7#

17...g6 18.Qh6!

17...h6 18.Qg3

18...g6 19.Bxg6!

18...g5 19.Ng4!



17. f4

Hoping for a miracle. White is lost but Lani isn't ready to resign yet. Surprisingly, she didn't try zapping him again. Perhaps that's the miracle.

17. ... Qd4+

Spiderpaw takes control of the game. White is down a knight and pawn. With a little care, he knew the end was near.

18. Rf2

White is also toasted after 18.Kh1 Bxf1 19.Bxf6 Bxg2+! 20.Kxg2 Qd2+ 21.Kh1 Qxc2 22.Bc3 (or 20.Qxg2 Qxf6).

18. ... Bc5!

Ice-O-Lani was impressed by Spidey's sense of style and, reluctantly, by his skill at chess.

Only now did she see his defensive plan. 17.Bxf6? is met by 17...Qxh2+! 18.Qxh2 Bxh2+ 19.Kxh2 Bxf1. Black will be "up the ex" and two pawns after 20.Rxf1 gxf6 or 20.Be7 Rfe8.

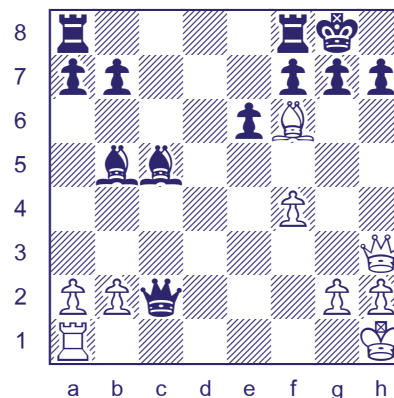
19. Bxf6

Still playing for mate.

19. ... Qxf2+

Not 19...Qxf6? 20.Qxh7#!

20. Kh1 Qxc2



21. Qg3

Shifting her threats to g7.

21. ... g6

Seeking a queen trade by 21...Qg6 is safer but slower. Spiderpaw was in a hurry to get out of the cold.

He wasn't sure why, but he also began to think that maybe Ice-O-Lani was not as bad as people said. She was certainly good at chess.

22. Qh4 Bc6

23. Qh3

The attack on g2 ties the white queen to its defence and ends all counterplay.

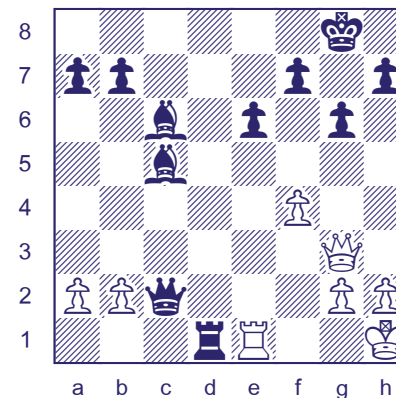
23. ... Rad8

With a big material plus, Black is willing to give back the exchange to activate a rook. Mate is on the way.

24. Bxd8 Rxd8

25. Re1 Rd1

26. Qg3



26. ... Qxg2+

27. Qxg2 Rxe1#

For the first time in a long while, Ice-O-Lani had been defeated. It didn't hurt the way she thought it would.

She even congratulated her opponent. "Nice game, I hope we can play again someday."

Spiderpaw was his usual friendly self. "Yea, me too." Then he had a great idea. "Hey, would you like a cup of hot chocolate?"

That was the kindest thing anyone ever said to her. She couldn't find it in her heart to say no. "Okay, sure."

So they walked over to the park where some of Spidey's friends had a campfire. Lily and Biff the B were there, and they had plenty of hot chocolate for everybody. Oatmeal cookies too.

Our hero was the first to speak. "Hey, guys. I'd like to introduce you to my new friend. Her name's Ice-O-Lani."

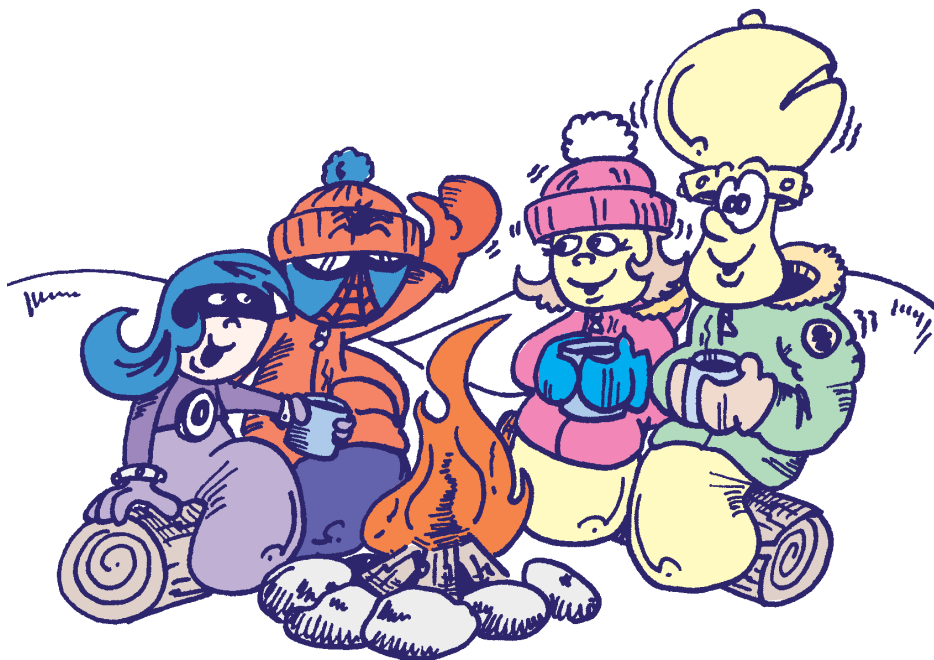
Biff was understandably speechless, but Lily knew just what to say. "Hi, I'm Lily. Glad to meet you."

Ice-O-Lani blushed. She wasn't used to such a warm reception. "I'm glad to meet you too. Please, call me Lani."

"Okay, Lani, have a seat. Let me get you a cup."

And so, dear readers, this tale ends on a cheerful note. Another Spiderpaw adventure in the books. Another ray of sunshine on the horizon.

Perhaps Lani will find some love and happiness in this world. After all, today she made three friends.



CANADIAN CHESS CHALLENGE

TEAM STATISTICS

1989 - 2016

TOTAL GAMES PLAYED	14919	MOST CHAMPIONSHIPS	ONTARIO	20
TOTAL PLAYERS	3224	MOST GOLD ONE YEAR	ONTARIO	9

STANDINGS

	AVERAGE PLACE	AVERAGE % SCORE	BEST % SCORE	HIGHEST PLACE	LOWEST PLACE
ONTARIO	1.4	83	90	1	3
QUEBEC	1.8	79	88	1	4
BRITISH COLUMBIA	3.1	65	75	2	5
ALBERTA	4.2	55	60	3	7
MANITOBA	5.7	46	58	3	8
NEW BRUNSWICK	6.0	44	61	3	8
NEWFOUNDLAND	6.7	40	56	4	9
NOVA SCOTIA	8.2	33	44	6	10
SASKATCHEWAN	8.3	34	47	5	10
PRINCE EDWARD ISLAND	9.6	23	44	7	10

MEDALS

	GOLD	SILVER	BRONZE	TOTAL	WEIGHT*	MOST 1 YEAR
ONTARIO	139	97	41	277	652	12
QUEBEC	92	96	66	254	534	12
BRITISH COLUMBIA	54	43	61	158	306	11
ALBERTA	17	27	49	93	154	6
MANITOBA	9	25	26	60	103	4
NEW BRUNSWICK	5	15	36	56	81	5
NOVA SCOTIA	9	14	10	33	66	3
SASKATCHEWAN	5	10	17	32	52	3
NEWFOUNDLAND	3	5	24	32	43	4
PRINCE EDWARD ISLAND	1	2	7	10	14	3

* GOLD = 3 SILVER = 2 BRONZE = 1

MOST IMPROVED

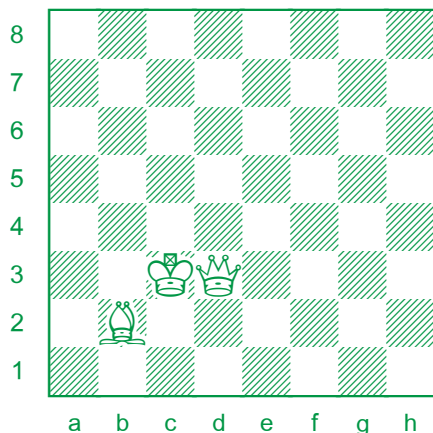
MORE POINTS SCORED

1999	Nova Scotia	+ 25½
2012	Nova Scotia	+ 17
1997	Alberta	+ 16
2011	Saskatchewan	+ 15½
2001	Nova Scotia	+ 14½
1993	Manitoba	+ 13
1994	Ontario	+ 12½

BIGGEST JUMP IN STANDINGS

1990	Alberta	7th to 4th
2005	Nova Scotia	9th to 6th
2011	Saskatchewan	9th to 6th
1999	Nova Scotia	10th to 7th
2002	MB	5th to 3rd
2006	MB	5th to 3rd
2007	AB	5th to 3rd
1993	NL	7th to 5th
2015	SK	7th to 5th
2000	MB	8th to 6th
2009	NB	8th to 6th
2012	NB	8th to 6th
2013	NL	8th to 6th
2014	MB	8th to 6th
1993	PE	9th to 7th
2000	SK	9th to 7th
2001	NS	9th to 7th
2003	NL	9th to 7th
2004	SK	9th to 7th
2012	NS	9th to 7th
2015	SK	9th to 7th

TRIPLE LOYD



Place the black king on the board so that:

- A. Black is in checkmate.
- B. Black is in stalemate.
- C. White has mate in 1.

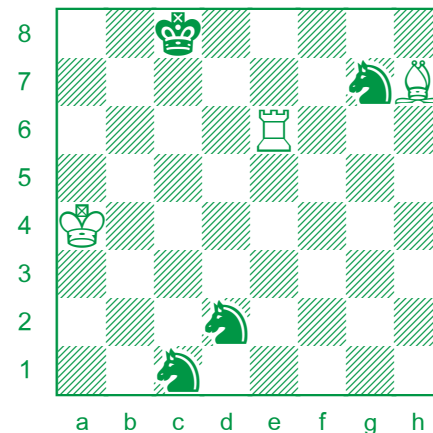
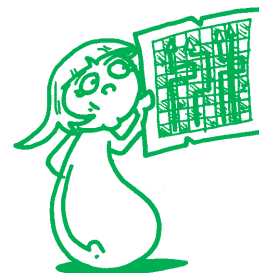


Setting the stage for the coming battle. Charlottetown 2017



Cheshire Cat. Reflections on the winning move.

chess maze



BISHOP MAZE IN 9

Only the white bishop moves. Capture the black king in nine moves (or less) without taking any pieces or moving to a square where the bishop can be taken. Black does not get a turn. *solution page 51*

ONTARIO TOP TEN

KINDERGARTEN

1 WANG Arthur	660
2 HE Wei	548
3 CHEN Richard	461
4 KHROUSTALEV Ryan	457
5 ULAHANNAN Stefan	454
6 LECHEMINANT Claire	389
7 ZHANG Octavius	382
8 DEMCHENKO Andrii	381
9 NING Jerry	345
10 STOEY Valentin	340

GRADE 1

1 GUO Richard	931
2 MANE Arnav	833
3 CHEN Alina	808
4 BAI Kingsley	791
5 ZINCHENKO Anthony	746
6 LI Max	677
7 LING Kathryn	672
8 PAGAYATAN Adrian	646
9 FAN Eric	620
10 MOK Yanniss	595

GRADE 2

1 WANG Nathan	1214
2 GAO Lucy	1097
3 QU Greta	957
4 XIE Daniel	916
5 ZHUANG Winnie	904
6 KSENYCH Andrew	881
7 GUO Rainyee	846
8 XU Alex	809
9 RAYMOND George	802
10 DE LEON Rut	789

GRADE 3

1 ATANASOV Anthony	1722
2 LI Adam	1319
3 QIU James	1296
4 WANG Kaison	1276
5 XU Daniel	1223
6 AI Amy	1202
7 NING Eric	1197
8 HUANG Richard	1183
9 ODOEMELAM Daniel	1075
10 LIU Aaron	1058

GRADE 4

1 CHEN Max	1660
2 ZHAO Jeffrey	1562
3 DINATOLO Zack	1349
4 GHAZARIAN Tigran	1307
5 SHAPIRO Idan	1278
6 BALACHANDRAN Kousihan	1262
7 GAO William	1262
8 LIN Angela	1233
9 ZHU Matthew	1191
10 LIU Henry	1148

GRADE 5

1 ISSANI Nameer	2219
2 NOORALI Aahil	1994
3 JEYAKUMAR Bhavatharshan	1692
4 RUSONIK Max	1684
5 SHEN Isamel	1502
6 FEDYUSHCHENKO Alexander	1443
7 JACOBS Michael	1437
8 GAO Raymond	1331
9 GILANI Mysha	1288
10 HU Kyle	1262

GRADE 6

1 ENGLAND Max	1747
2 ZHAO Jonathan	1577
3 CHEN Hao	1491
4 MO Aidan	1486
5 WU Nicholas	1412
6 ZHAO Jeffrey	1409
7 CHEN Harry	1396
8 MILHOULTA Ronith	1320
9 YUAN Daniel	1312
10 TANG Matthew	1283

GRADE 7

1 VETTESE Nicholas	2302
2 LI Alan	1727
3 LIN Benjamin	1659
4 MIRABELLI Aidan	1600
5 AKOPHYAN Nick	1590
6 WASHIMKAR Arhant	1578
7 LIU Lambert	1567
8 ZHANG Brighton	1561
9 YANG Fan	1434
10 YU Daniel	1399

GRADE 8

1 HUA Eugene	2295
2 NORITSYN Sergey	2262
3 TALUKDAR Rohan	2246
4 DEMCHENKO Svitlana	2086
5 MING Wenyang	1930
6 LIU Daniel	1699
7 GUO Thomas	1699
8 FENG Richard	1667
9 ZHANG Henry	1656
10 SURYA Benito	1625

GRADE 9

1 ZHAO Yue Tong	1859
2 CAI Jason	1843
3 YIE Kevin	1796
4 PENG Sarah	1700
5 XUE Andrew	1682
6 LUO Ricky	1668
7 JIA Jacky	1649
8 LIANG Hairan	1648
9 ZHANG Zhehai	1591
10 DENG Yi	1545

GRADE 10

1 CHEN Richard	2402
2 WAN Kevin	2356
3 ZHANG Yuan Chen	2325
4 ZOTKIN Daniel	2240
5 ZHAO Harry	2225
6 XU Jeffrey	2096
7 BALENDRA Harigaran	2093
8 SHAMRONI Dennis	2041
9 SHEN Chris	2008
10 NGUYEN Duy Thien An	1682

GRADE 11

1 BELLISSIMO Joseph	2373
2 ZHOU Qiyu	2344
3 LEI Sean	2220
4 YU Wenlu	2205
5 WANG Eric	2104
6 ZHONG Joey	2091
7 ZHANG Jeff	1619
8 PENG Janet	1591
9 AGHAMALIAN Derick	1574
10 SONG Eric	1510

GRADE 12

1 PREOTU Razvan	2658
2 SONG Michael	2531
3 LI Yinshi	2239
4 KUTTNER Simon	1956
5 LI Michael	1937
6 YE Hanyuan	1882
7 MICHELASHVILI Aleksandre	1880
8 TERRY Joshua	1766
9 MUNTANER Daniel	1750
10 HAY Jonathan	1741

HONOUR ROLL

1 PREOTU Razvan	2658
2 SONG Michael	2531
3 CHEN Richard	2402
4 BELLISSIMO Joseph	2373
5 WAN Kevin	2356
6 ZHOU Qiyu	2344
7 ZHANG Yuan Chen	2325
8 VETTESE Nicholas	2302
9 HUA Eugene	2295
10 NORITSYN Sergey	2262

QUEBEC TOP TEN

KINDERGARTEN

1 LOU Aaron	592
2 YU Michael	522
3 KE Lynn	493
4 OHIRECH Adam	474
5 QIN Weixuan	436
6 AREVALO Sebastian	410
7 TENACINI Alicia	362
8 BOVE Raphael	360
9 DJUROVICH Ilya	344
10 BOURAS Yasser	342

GRADE 1

1 GEORGESCU Luca	660
2 YIN Elson	626
3 RAMAMONJISOA Nikita	624
4 XUAN Evan	598
5 LIU Lucas	587
6 MEMON Saad	540
7 BERGMAN Max	528
8 HAGEGE Eliot	526
9 BENZACAR William	516
10 IORDANESCU Victor	514

GRADE 2

1 HUARD Matheo	1140
2 YAN Alex	1072
3 LI James	1012
4 LIU Eric	958
5 DENG Eric	863
6 JIANG Barron	860
7 WANG Lucy	846
8 DUFRESNE Christophe	817
9 BEREZIN Gabriel	705
10 LI Jayson	668

GRADE 3

1 ZHONG Kevin	1579
2 CHANG Alexander	1324
3 CHAPDELAINE Gwyn	1175
4 OMICHI Kevin	1168
5 BELIVEAU Mathieu	1119
6 TAO Neilson	1088
7 LI Ze Yue	1060
8 BOCAN Richard	997
9 HE Kenneth	963
10 HE Zekai	933

GRADE 4

1 GUIPI BOPALA Prince	1889
2 ZHENG Richard	1725
3 ZHANG Chuhang	1381
4 LIU Kevin	1320
5 LI Zhong Xuan	1230
6 OREJUÉLA LIU Daniel	1219
7 FERNANDEZ BUSTO Edouard	1201
8 CAO Edgar	1185
9 WANG Rachel	1175
10 CUI Guang Zhu	1148

GRADE 5

1 OMICHI Haruaki	1469
2 CRACIUN David	1362
3 TSUKERMAN Julia	1313
4 ZHONG Ziyi	1279
5 ZONZALEZ Tristan	1203
6 LEI Storm	1200
7 DENG Kevin	1145
8 CAI Tony	1139
9 SLIVE Edouard	1127
10 MASIMOV Charles-Ismael	1126

GRADE 6

1 HUANG Qiuyu	2215
2 TANAKA Tyler	1684
3 RICHARD Leo	1540
4 BERCUVITZ Tani	1477
5 YU Daniel	1421
6 WANG Isabelle	1262
7 LIU Owen	1242
8 ARCANU Louis	1188
9 MOCANU Alexander	1177
10 GUZZO Nikolas	1137

GRADE 7

1 RODRIGUE-LEMIEUX Shawn	2259
2 DURETTE Francis	2210
3 ZHONG Wenxuan	1948
4 YU Xi Ming	1518
5 LIU Robert	1421
6 DEMERS Alexis	1370
7 GRANDMONT Mathias	1355
8 SHI Leo	1309
9 ZUO Dustin	1304
10 WANG Caroline	1225

GRADE 8

1 TINICA Gabriel	1732
2 TSYPIN Allison	1572
3 LAI William	1564
4 GUAN Zi Yu	1512
5 ZHAO William	1478
6 YANG Muyuan	1418
7 YU Alec	1412
8 LIU Julia	1253
9 KIRYAKOV Marin	1239
10 LI Tony	1186

GRADE 9

1 OUELLET Maili-Jade	2224
2 FAN Run Kun	2074
3 ZHANG Hou Han	1674
4 LUO Muhan	1423
5 LU Jasmine	1420
6 LU Daisy	1420
7 TURGEON Yoakim	1358
8 YIP Matthew	1289
9 DYELL Justin	1286
10 HUANG Debo	1269

GRADE 10

1 SAHA Ananda	2090
2 LI Yi Lin	1929
3 JOHNSON-CONSTANTIN Matthieu	1912
4 YANG Eddie	1739
5 ZHANG Evan	1724
6 SAINE Zachary	1724
7 ST-CYR Xavier	1607
8 SUN Benjamin	1522
9 HUANG Junhao	1488
10 AUDET Olivier	1455

GRADE 11

1 SHI Linda	1767
2 LUO Wei Han	1718
3 WANG Kelly	1703
4 GAO Christine	1686
5 LUO Alan	1636
6 HE Haley	1419
7 LI Frank	1384
8 VAILLANT Charles-Etienne	1382
9 TINICA Sabina	1379
10 XIONG Yi Wei	1371

GRADE 12

1 YU Zong Yang	2537
2 CHIKU-RATTE Olivier Kenta	2513
3 ZHU Hong Rui	2240
4 LIU Yu Qing	2181
5 CHANG Michael	1873
6 POIRIER Alexis	1506
7 MUNSHI Rubayat	1455
8 VOROBIEV Alexander	1430
9 EPURE Doru-Alexandru	1412
10 NIKULICH Andrey	1363

HONOUR ROLL

1 YU Zong Yang	2537
2 CHIKU-RATTE Olivier Kenta	2513
3 RODRIGUE-LEMIEUX Shawn	2259
4 ZHU Hong Rui	2240
5 OUELLET Maili-Jade	2224
6 HUANG Qiuyu	2215
7 DURETTE Francis	2210
8 LIU Yu Qing	2181
9 SAHA Ananda	2090
10 FAN Run Kun	2074

RATINGS

Scholastic ratings for all players who have taken part in a CMA tournament during the last three years can be found on the *Chess'n Math Association* webpage:

www.chess-math.org

Click the "ratings" tab on the homepage, which will take you to the *ratings page*:

www.chess-math.org/ratings

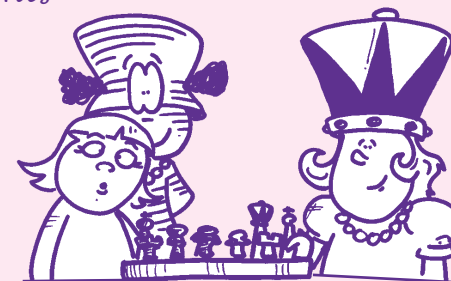
Once on the *ratings page*, with Kiril and the map of Canada, you can search ratings by name, province, age, or grade! You can also find a list of recently rated tournaments under the *tournaments* tab. Click on the event ID number to see the crosstable.

For information on how to rate your tournaments:

www.chess-math.org/how-have-your-tournaments-rated

Frizoon LePaw'n presents

TOP GIRLS CANADA



GRADE 1

1 CHEN Alina	808	ON
2 LING Kathryn	672	ON
3 MOUSAVI Dorina	542	AB
4 MAHARAJ Grace	533	AB
5 INOZEMTSEVA Milana	528	ON

GRADE 2

1 GAO Lucy	1097	ON
2 QU Greta	957	ON
3 ZHUANG Winnie	904	ON
4 GUO Rainyee	846	ON
5 WANG Lucy	846	QC

GRADE 3

1 YU Sophia	1250	BC
2 AI Amy	1202	ON
3 MOK Gillian	1039	BC
4 HUA Michelle	983	ON
5 JEYAKUMAR Mathusha	858	ON

GRADE 4

1 LIN Angela	1233	ON
2 WANG Rachel	1175	QC
3 GUO Veronica	1049	BC
4 POBERESHNIKOVA Faina	1020	ON
5 JAIN Ankita	985	QC

GRADE 5

1 TSUKERMAN Julia	1313	QC
2 FURDA Diana	1289	MB
3 GILANI Mysha	1288	ON
4 PLOTKIN Julia	1196	ON
5 VELLANKI Naga	1188	ON

GRADE 6

1 TIAN Sherry	1660	BC
2 VAN Anna	1301	BC
3 GUO Hazel	1274	ON
4 WANG Isabelle	1262	QC
5 KAMATH Maya	1003	ON

👑 PRINCESS PARADE

1 TIAN Sherry	1660	BC
2 TSUKERMAN Julia	1313	QC
3 VAN Anna	1301	BC
4 FURDA Diana	1289	MB
5 GILANI Mysha	1288	ON
6 GUO Hazel	1274	ON
7 WANG Isabelle	1262	QC
8 YU Sophia	1250	BC
9 LIN Angela	1233	ON
10 AI Amy	1202	ON

GRADE 7

1 TAN Kylie	1338	ON
2 HE Emma	1263	ON
3 WANG Caroline	1225	QC
4 MALE PATHIRANAGE Thisandi	1204	ON
5 YANG Angelina	1202	BC

GRADE 8

1 DEMCHENKO Svitlana	2086	ON
2 TSYPIN Allison	1572	QC
3 CUI Cynthia	1469	NB
4 QIAO Cindy	1438	ON
5 ZHANG Taylor	1362	ON

GRADE 9

1 OUELLET Maili-Jade	2224	QC
2 PENG Sarah	1700	ON
3 YU Rinna	1520	BC
4 YU An	1506	BC
5 ZHOU Lily	1473	ON

GRADE 10

1 LI Yi Lin	1929	QC
2 WANG Constance	1570	ON
3 LIU Dora	1527	ON
4 ZHU Jiarong	1499	ON
5 BREWSTER Paula	1458	BC

GRADE 11

1 ZHOU Qiyu	2344	ON
2 SHI Linda	1767	QC
3 WANG Kelly	1703	QC
4 GAO Christine	1686	QC
5 PENG Janet	1591	ON

GRADE 12

1 NYAMDORJ Uranchimeg	1909	BC
2 TAO Rachel	1630	ON
3 LI Kristen	1468	ON
4 POBERESHNIKOVA Agniya	1462	ON
5 GIBLON Melissa	1359	ON

👑 CANADIAN QUEENS

1 ZHOU Qiyu	2344	ON
2 OUELLET Maili-Jade	2224	QC
3 DEMCHENKO Svitlana	2086	ON
4 LI Yi Lin	1929	QC
5 NYAMDORJ Uranchimeg	1909	BC
6 SHI Linda	1767	QC
7 WANG Kelly	1703	QC
8 PENG Sarah	1700	ON
9 GAO Christine	1686	QC
10 TIAN Sherry	1660	BC

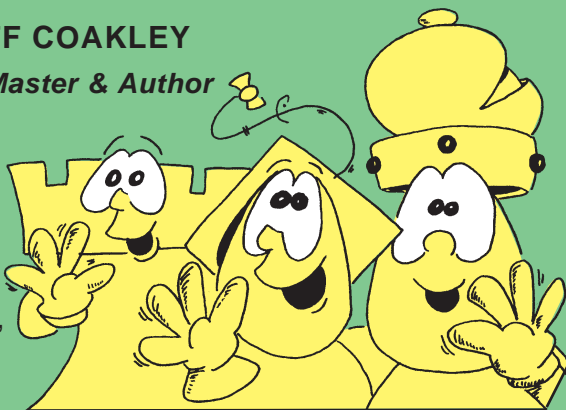
WINNING CHESS For Kids

homepage of JEFF COAKLEY

Canadian Chess Master & Author

Information on
Winning Chess
For Kids series:

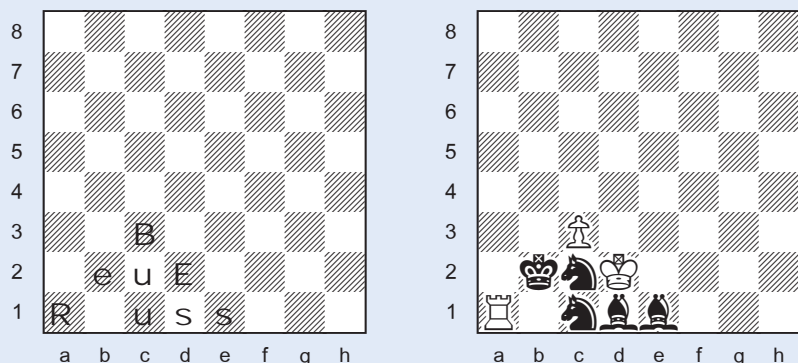
Book Descriptions,
Reviews, Errata,
Announcements.



www.coakleychess.com

LILY'S PUZZLER

see pages 23 and 51.



E = king. There must be a king of each colour. E is the only letter with a capital and lowercase.

U = knight. U is not a rook or bishop because there would be an impossible check (from c2 or c1). U is not a queen because there would be an impossible double check. U is not a pawn because there is a 'u' on the 1st rank.

S = bishop. S is not a queen because there would be an impossible double check. S is not a pawn because there is an 's' on the 1st rank. S is not a rook because then R would be a queen or bishop, and both kings are in check.

R = rook. R is not a pawn ('R' on 1st rank). R is not a queen because both kings would be in check.

B = white pawn. B is not a queen or black pawn because both kings would be in check. Therefore the capital letters are the white pieces.

The last move was ...Be1+ (or ...e1=B+ or ...fxe1=B+)

chess rebus by Andrey Frolikin & Jeff Coakley 2017

*Russ, Bess, and Sue
Be sure to use the bus
to see the suburbs.*



TOURNAMENTS FOR KIDS

TORONTO

Chess'n Math 416 488-5506

Marshall McLuhan School
1107 Avenue Rd.

April 9 ON CC qualifier

May 7 Grand Prix

May 28 ON team championship

MONTREAL

Chess'n Math 514 845-8352

Loisirs St-Henri
530 du Couvent

April 23 QC CC qualifier

April 23 Girls championship

May 28 Grand Prix

June 11

OTTAWA

Chess'n Math 613 565-3662

Glebe Community Centre
175 Third Ave.

April 23 Grand Prix

May 28

June 11 Grand Prix

QUEBEC TEAM CHAMPIONSHIP

MONTREAL April 1-2

Jean de Brebeuf College
4 players from same school
three sections by grade

Chess'n Math Association www.chess-math.org

TOP CANADA grade K -6

1	Nameer Issani		2219	ON
2	Qiuyu Huang		2215	QC
3	Aahil Noorali		1994	ON
4	Prince Guipi Bopala		1889	QC
5	Kevin Low		1879	BC
6	Patrick Huang		1838	BC
7	Max England		1747	ON
8	Richard Zheng		1725	QC
9	Neil Doknjas		1724	BC
10	Anthony Atanasov		1722	ON

For tournaments and other chess events in your area, visit these websites or contact your local organizer.

BRITISH COLUMBIA

Victoria

Victoria Junior Chess Society
victoriajuniorchess.pbworks.com

Brian Raymer
braymer@telus.net

Vancouver

Vancouver Chess School
vanchess.ca

Maxim Doroshenko
info@vanchess.ca

ALBERTA

Edmonton

Roving Chess Nuts
rovingchessnuts.com

Bruce Thomas
rovingchessnuts@shaw.ca

Calgary

Calgary Junior Chess Club
sites.google.com/site/calgaryjuniorchessclub

Paul Gagne
paul.gagne@cssd.ab.ca

SASKATCHEWAN

Saskatchewan Scholastic Chess Association
ssca.saskchess.com

Don MacKinnon
donmac451@sasktel.net

MANITOBA

Manitoba Scholastic Chess Association
scholasticchess.mb.ca

Jeremie Piché
jeremie.piche@scholasticchess.mb.ca

ONTARIO

Ottawa

Chess'n Math Association
chess-math.org
250 Bank St.

Drew Metcalfe
(613) 565-3662
ottawa@chess-math.org

Toronto

Chess'n Math Association
chess-math.org
701 Mt. Pleasant Rd.

Francis Rodrigues
(416) 488-5506
toronto@chess-math.org

Toronto

Children Chess School of Toronto
chessforchildren.ca

Nathalia Khoudgarian
info@chessforchildren.ca

Toronto

Knights of Chess School
sites.google.com/site/theknights/chess

Yuri Lebedev
lebedev@post.com



Seneca Hill

Seneca Hill Chess Club
senecahillchess.com

Corinna Wan
oriolechess@rogers.com

Guelph

Chess Express
chessexpress.ca

Hal Bond
halbond@sympatico.ca

Kitchener

KW Youth Chess Club
psmcd.net/kwycc

Patrick McDonald
patrick@psmcd.net

Cornwall

Au Diapason Chess
audiapason.ca

Clifford Labre
clifford@audiapason.ca

Windsor

Windsor Chess
windsorchess.com

Vlad Drkulec
vdrkulec@hotmail.com

QUEBEC

Chess'n Math Association
3423 St. Denis, Montreal
chess-math.org

Virginia Roux
(514) 845-8352

NEW BRUNSWICK

Pierre Lambert
plambert1959@gmail.com

NOVA SCOTIA

Nova Scotia Scholastic Chess Association
nssca.ca

Chris Felix
chris.felix@cdevastation.com

PRINCE EDWARD ISLAND

PEI Youth Chess Association
peiyca.ca

Aaron Rainnie
peiyouthchess@gmail.com

NEWFOUNDLAND

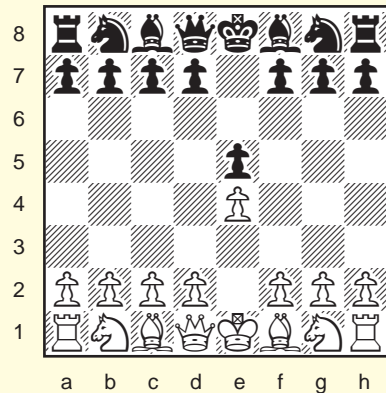
NL Scholastic Chess Association
www.chess.nl.ca

Chris Dawson
info@chess.nl.ca

HOW TO READ A CHESS GAME

It's easy. The board has 8 files and 8 ranks. Files are the rows of squares that go up and down. Each one is named by a small letter. Ranks are rows that go sideways. Each one is named by a number.

Every square also has a name. The first part is its file and the second part is its rank. In this diagram, a white pawn moved to e4 and a black pawn to e5.



Here are some special symbols:

+	check
#	checkmate
e. p.	en passant
O - O	castles kingside
O - O - O	castles queenside
1 - 0	white wins
0 - 1	black wins
½ - ½	draw
!	excellent move
?	mistake
!?	cool move
?!	weird (weak) move

Next is the square that the piece moves to. **Bc4** says that a bishop moves to the square c4. When a piece is captured, an **x** is put before the square. **Qxf7** means a queen takes on f7.

If a pawn captures, the letter of the file it starts on is given first, then an **x** followed by the square it takes on. **exd5** says a pawn on the e-file captures on the square d5.

When two pieces of the same kind can go to the same spot, another letter is put after the piece to show what file it came from. **Rae1** tells us that a rook on the a-file moves to e1.

If the pieces that can move to the same spot are on the same file, then their rank number is added. **N6e4** means the knight on the 6th rank moves to e4.

The game below is written in **algebraic notation**. Kiril was new to chess and fell into an old trap called **Scholar's Mate**!

	ROCKY	KIRIL
1.	e4	e5
2.	Qh5	d6
3.	Bc4	Nf6?
4.	Qxf7 #	

Oh no! Kiril got mated in just four moves. That was no fun!

* SOLUTIONS *

MATES

- 1.Rd6#
- 1.h4+ Kxh4 2.Bf6#
- 1.Qc6+ Bxc6 2.Bxc6#
- 1.b7+ Kxb7 2.Qh1#
- 1.Be5+ Qxe5
2.Rh7+ Bxh7 3.Nf7#

TACTICS 102

- 1.Qxd5 exd5? 2.Nf6#
- 1.Qxd5 Bxd5? 2.Bb5#
- 1.Rxe4 Bxe4? 2.Nxd6#
- 1.Qxh6 gxh6? 2.Re8#

KIRIL'S KLAS

- 1.Qb3+ Kd4 2.Qd3#
- 1...Qe1 2.Kd4 Qc3#

COMBO MOMBO

- 1.Qxf5 Qxf5? 2.Ne7#
1...gxf5? 2.Rg3+ Qg6 3.Ne7#
- 1...Rxc5 2.Rxc5? Qb1+ 3.Qd1 Qxd1#

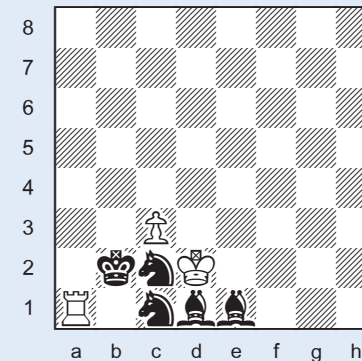
CHESS MAZE

Bh7-c2-d1-g4-h3-g2-c6-b5-a6xc8

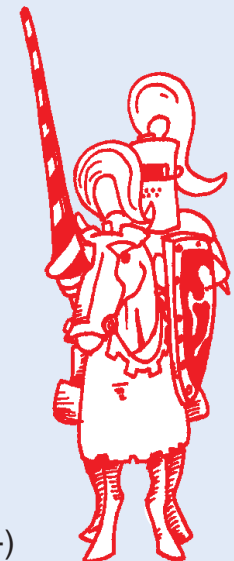
TRIPLE LOYD

- Kc1#
- Ka2=
- Ka4 (Qa6#)

LILY'S PUZZLER



R = rook White = capitals
E = king Black = lowercase
B = pawn
U = knight last move: ...Be1+
S = bishop (or ...e1=B+ or ...fxe1=B+)
See page 46 for detailed explanation.



SCHOLAR'S MATE

3423 St. Denis #400

Montreal, Quebec

H2X 3L2

www.chess-math.org



BYE FOR NOW!