

SCHOLAR'S MATE

CANADA'S CHESS MAGAZINE FOR KIDS
OCTOBER 2009 number 99



SCHOLAR'S MATE GOES ON-LINE!!

A DAY IN CHESS COURT

TOURNAMENT TALK

SCHOLAR'S MATE

IS NOW ON-LINE !!

Starting with this issue (#99), *Scholar's Mate* will no longer be printed. But don't be sad. You can still enjoy *Canada's Chess Magazine For Kids* on-line, for free!

Chess'n Math Association will continue to publish *Scholar's Mate* five times per year as a digital DNL document, a great new format which has the same look as the printed magazine, including pages that actually turn! A printable pdf version of the magazine is also available.

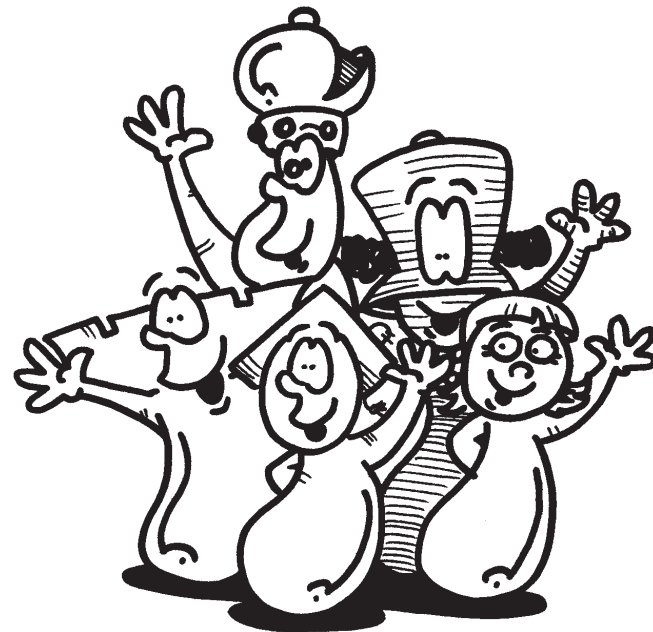
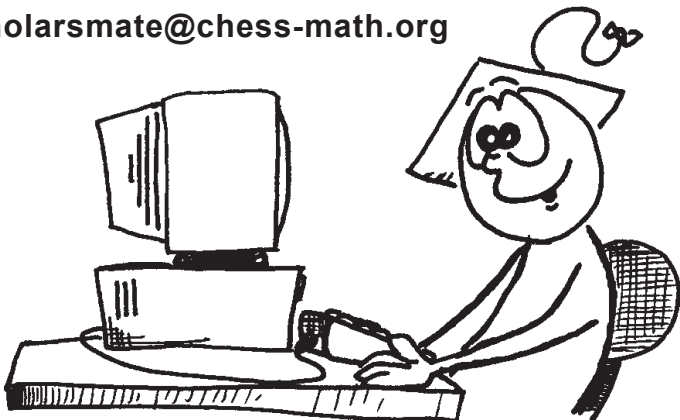
You can read the "e-magazine" directly on the CMA webpage or download it to your computer for viewing at any time. Either way, you will need a DNL Reader, which can be quickly downloaded for free at our site.

www.chess-math.org

A password is required to access the e-magazine. To get your free password, go to our webpage and fill in your e-mail address. We will send your password right away.

If you have any questions about the e-magazine or your password, please contact us at:

scholarsmate@chess-math.org



HELLO FRIENDS!

Welcome to SCHOLAR'S MATE.

I'm Kiril the Pawn, and these are my pals: Rocky Rook, Biff the B, Frizoon, and Lily. We hope you like the magazine. It's our first on-line issue!

As usual, there were lots of big tournaments during the summer. Congratulations to Raja Panjwani, the new Canadian junior champion, for earning the International Master title.

Good luck to the players representing Canada at the World Youth Championships in Turkey next month!

Kiril

SCHOLAR'S MATE

3423 St. Denis #400
Montreal, Quebec H2X 3L2



EDITOR Jeff Coakley
Illustrator Antoine Duff

Scholar's Mate is published five times per year by the Chess'n Math Association. Dates of issue : October 15, December 15, February 15, April 15, June 15

Reproduction by any means, mechanical or electronic, is forbidden except by permission of Scholar's Mate.

October 2009 (date of issue) ISSN 0847-1428
Legal Deposit National Library of Canada #D373119
Déposit Légal Bibliothèque nationale du Québec #D8951041

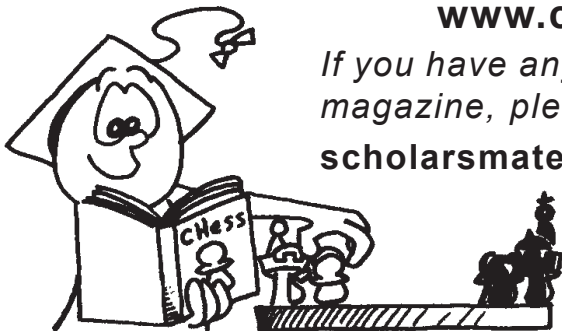
Hi, friends!

Scholar's Mate is now an e-magazine! Anyone can read it for free on the internet, so there are no more subscriptions. But you will need a password and a free program called DNL Reader. Both are available on our website. To get your free password, go to the CMA site and fill in your e-mail address. We will send your password right away!

www.chess-math.org

If you have any questions about the magazine, please contact us at:

scholarsmate@chess-math.org



**SEE YOU
ON-LINE!**

SCHOLAR'S MATE
OCTOBER 2009 #99



CONTENTS

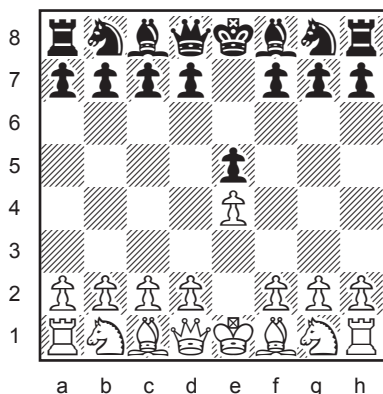
TOURNAMENT TALK	7
Kiril's Klass	
Can You Talk A Good Game?	
DID YOU KNOW ... ?	31
New Feature On Chess Trivia	
With Your Host Biff the B	
A DAY IN CHESS COURT	32
Kiril's Korner	
The Invisible Pawn Part 1	

Magazine Info	4	Kiril's Kontest	24
You Are Here!	5	Lily's Puzzler	26
How To Read Chess	6	Mate in 1	28
Ed & Alec	11	Mate in 2	29
Regional Top 10's	12	Mate in 3	30
Top Girls	16	Tournaments	46
Who's The Goof?	17	CCC Stats	48
Chess Challenge	18	Ratings	49
Combo Mombo	19	Kiril's e-mail	49
Tactics 101	20	Solutions	50
News	22	Top Canada	51

HOW TO READ A CHESS GAME

It's easy. The board has 8 files and 8 ranks. Files are the rows of squares that go up and down. Each one is named by a small letter. Ranks are rows that go sideways. Each one is named by a number.

Every square also has a name. The first part is its file and the second part is its rank. In this diagram, a white pawn moved to e4 and a black pawn to e5.



Here are some special symbols:

+	check
#	checkmate
e. p.	en passant
O - O	castles kingside
O - O - O	castles queenside
1 - 0	white wins
0 - 1	black wins
½ - ½	draw
!	excellent move
?	mistake
!?	cool move
?!	weird (weak) move

When moves are written down, the first capital letter shows the piece which moves. **Q** is queen. **B** is bishop. **R** is rook. **N** is used for knight because the king is **K**. If there is no capital letter, that means a pawn moves.

Next is the square that the piece moves to. **Bc4** says that a bishop moves to the square c4. When a piece is captured, an **x** is put before the square. **Qxf7** means a queen takes on f7.

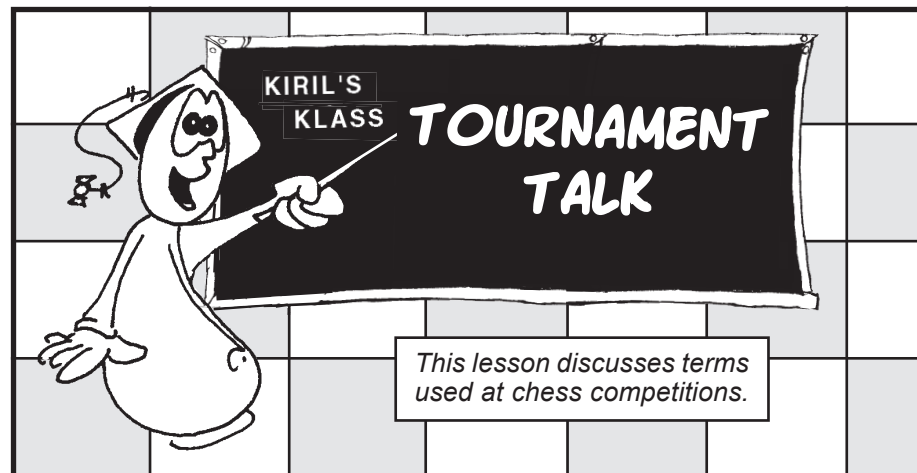
If a pawn captures, the letter of the file it starts on is given first, then an **x** followed by the square it takes on. **exd5** says a pawn on the e-file captures on the square d5.

When two pieces of the same kind can go to the same spot, another letter is put after the piece to show what file it came from. **Rae1** tells us that a rook on the a-file moves to e1. If the pieces that can move to the same spot are on the same file, then their rank number is added. **N6e4** means the knight on the 6th rank moves to e4.

The game below is written in **algebraic notation**. Kiril was new to chess and fell into an old trap called **Scholar's Mate**!

	WHITE	KIRIL
1.	e4	e5
2.	Qh5	d6
3.	Bc4	Nf6 ?
4.	Qxf7 #	

Oh no! Kiril got mated in just four moves. That was no fun!



The word 'tournament' is very old. It was the name of the contests played long ago between knights at the royal courts of Europe. Today, a *tournament* is a sports event where a group of people play for prizes.

There are three ways to run chess tournaments:

- ROUND ROBIN
- KNOCKOUT
- SWISS SYSTEM

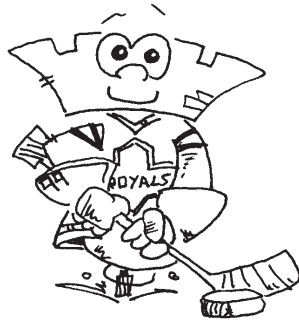
In a *round robin*, each player has one game against every other player. A win counts 1 point, a draw ½ point, and a loss 0. Whoever scores the most points is the winner.

In a *double round robin*, each player has two games with every other player, one with the white pieces, and one with black.

In Canada, round robins are the most common type of tournaments for kids. Students are usually divided into groups of 4 or 6 players with others of similar age and skill.

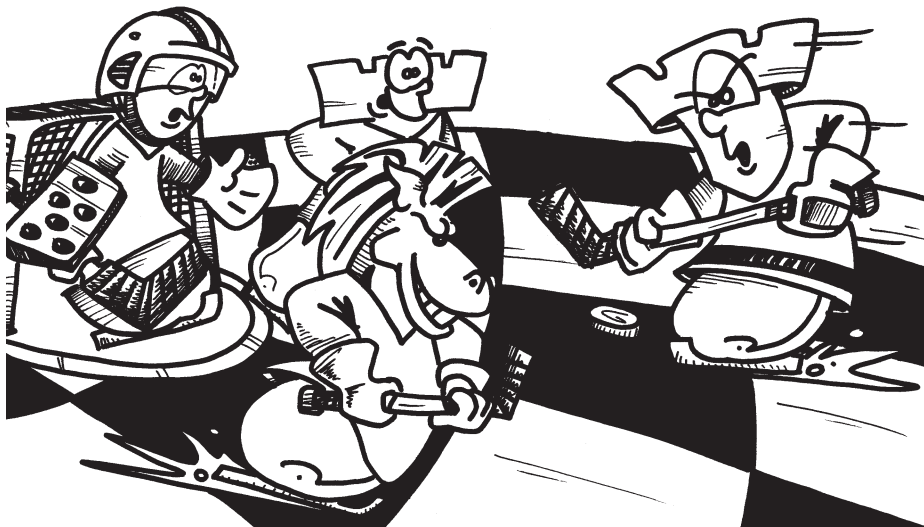


The second method of running a chess competition is a *knockout tournament*. This is the way that hockey and baseball do their playoffs. Once you lose a match, you are out of the competition. Only the winners advance to play more games.



The last kind of “tourney” is the *Swiss system*. In each round, players who have the same score face each other. Everybody plays the same number of games and no one gets knocked out. This a good system when there are a lot of people. However, it is more complicated than the other methods, and requires either an experienced director or a computer program to make the pairings (to decide who plays who).

We have other words to describe tournaments too. An *open* event is one where anybody is allowed to play. In a *closed* event, players have to qualify or be invited. Tournaments can also be *individual* or *team* competitions. If you’ve never played on a chess team, then you’re really missing lots of fun!



Here are some more words that you might hear at a chess tournament:

active chess a time limit where each player has 25 or 30 minutes for the game.

adjourn to stop a game temporarily, writing down the position so it can be continued later.

blitz a time limit where each player has 3 or 5 minutes.

bughouse a variant of chess played by four people on two boards, where pieces captured by one player can be placed on the other board by their partner.

bye a point given to a player who doesn’t have an opponent because there is an odd number of players; or a half point sometimes given to a player who asks not to play in a certain round.

crosstable a wall chart for showing the names and results for players.

F.I.D.E. Fédération Internationale des Échecs (the world chess federation).

forfeit loss of a game from failure to show up or by violation of the rules.

increment time added to the clock after each move, usually between 1 and 30 seconds.

j’adoube French for “I adjust”. When playing touch move, say this before straightening a piece on its square so that you don’t have to move it. (Or you can just say “adjust.”)

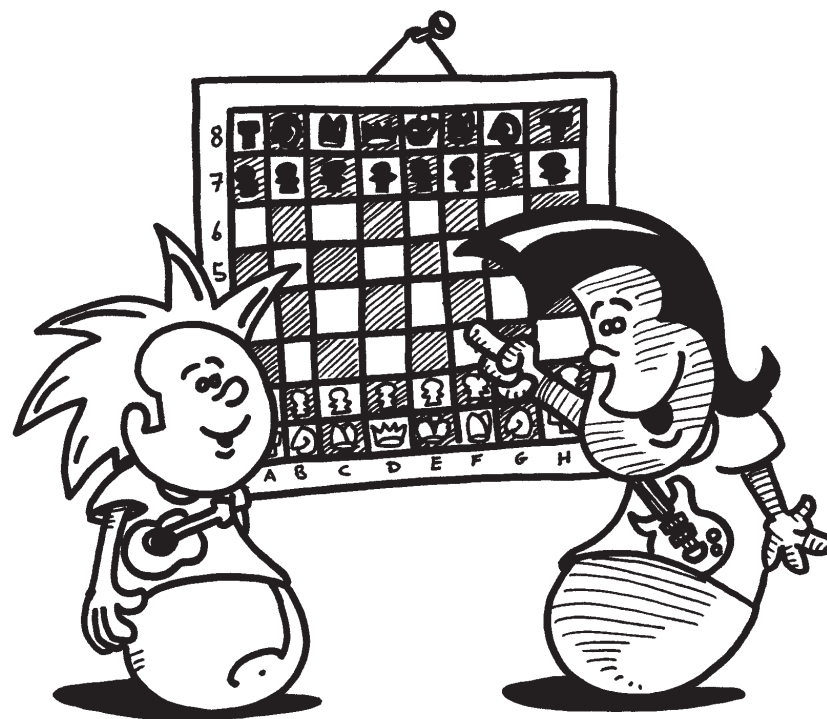
pairings a list that shows who plays who, and with which colour.





- register** to sign up for a tournament
- resign** to give up a game as lost.
- scoresheet** the paper that a player writes their moves on.
- simul** short for simultaneous exhibition, a match where one strong player plays many games at the same time.
- skittles** chess games played for fun, and not as part of the competition.
- standard** a time limit with at least 60 minutes for each player.
- sudden death** a time limit in which all the moves (or all remaining moves) of a game must be made.
- tiebreak** a numerical method for deciding who gets a prize when players are tied.
- time limit** the amount of time given to each player when a chess clock is used.
- time trouble** a situation where a player is short of time and must play their moves in a hurry.
- touch move** a rule that requires players to move (or capture) any piece they intentionally touch.

SPECIAL ED and SMART ALEC



You know, Ed, white has several good moves in the starting position.

Yea, Alec. But I still think it's better to play black.

Why's that, dude?

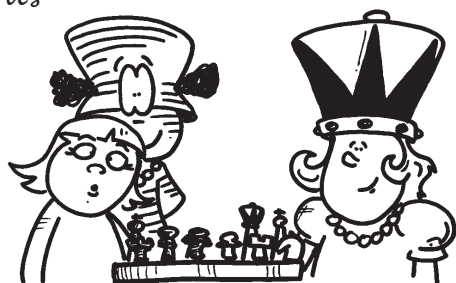
Because white has to go first.

But, Ed, having the first turn is an advantage.

Well, dude, not when you make as many mistakes as me!

Frizoon LePawN presents

TOP GIRLS CANADA



GRADE 1

1	ZHANG Taylor	568	ON
2	VACHON Laurie	485	QC
3	HLUSZOK Evelyne	485	MB
4	GUERRE Anael	479	QC
5	SIVADAS ShuruthiSai	470	ON

GRADE 2

1	GAO Catherine	726	QC
2	KANESHALINGAM Mathanhe	624	ON
3	FELDMAN Michelle	621	ON
4	TETREAULT Melanie	588	QC
5	LU Daisy	562	QC

GRADE 3

1	LIU Dora	932	ON
2	TAM Rachel	902	ON
3	BRICHKO Kate	886	QC
4	ZHU Jiarong	760	QC
5	ROSCA Elena	736	QC

GRADE 4

1	WANG Kelly	1516	QC
2	SHI Ling Yun	1363	QC
3	BILODEAU-SAVARIA Cendrina	1237	QC
4	GAO Christine	1150	QC
5	ZHAO Jia Yun	1026	QC

GRADE 5

1	GIBLON Melissa	1129	ON
2	MILICEVIC Aleksandra	1100	ON
3	TAO Rachel	979	ON
4	CHENG Megan	978	ON
5	RIPSTEIN Aviva	910	ON

GRADE 6

1	PENG Jackie	1426	ON
2	LOUIE Marcella	1204	AB
3	YUN Chang	1169	QC
4	SAMETOVA Zhanna	1145	ON
5	ROSCA Maria	1126	QC

PRINCESS PARADE

1	WANG Kelly	1516	QC
2	PENG Jackie	1426	ON
3	SHI Ling Yun	1363	QC
4	BILODEAU-SAVARIA Cendrina	1237	QC
5	LOUIE Marcella	1204	AB
6	YUN Chang	1169	QC
7	GAO Christine	1150	QC
8	SAMETOVA Zhanna	1145	ON
9	GIBLON Melissa	1129	ON
10	ROSCA Maria Alexandra	1126	QC

GRADE 7

1	GIBLON Rebecca	1289	ON
2	XIA Linda	1057	ON
3	QIU Amy	1023	ON
4	PEREZ Franklin	1022	ON
5	WONG Tiffany	949	ON

GRADE 8

1	KALAYDINA Regina	1424	AB
2	WANG Yan	1417	QC
3	MA Indy	1319	QC
4	YU Ke Xin	1284	QC
5	ZHAN Reena	1111	ON

GRADE 9

1	ROY Myriam	1678	QC
2	BOTEZ Alexandra	1566	BC
3	SHU Chang	1058	QC
4	ZHANG Wenyue	1023	QC
5	NGUYEN Nancy	994	ON

GRADE 10

1	YUAN Yuanling	2286	ON
2	ORLOVA Yelizaveta	1658	ON
3	SAULNIER-LEGAULT Lea	1440	QC
4	UTEPOVA Alika	1303	QC
5	LEE Melissa	1293	ON

GRADE 11

1	KAGRAMANOV Dalia	1682	ON
2	WAN Karen	1182	ON
3	BLAKE Candace	1026	ON
4	FRENETTE Catherine	1025	NB
5	BELANGER Priscilia	970	QC

GRADE 12

1	XIONG Sonja	1440	ON
2	DU Jasmine	1361	NS
3	YANG Marguerite	1174	QC
4	ROMANOWICH Katrina	1126	ON
5	HOAD Sandy	1104	ON

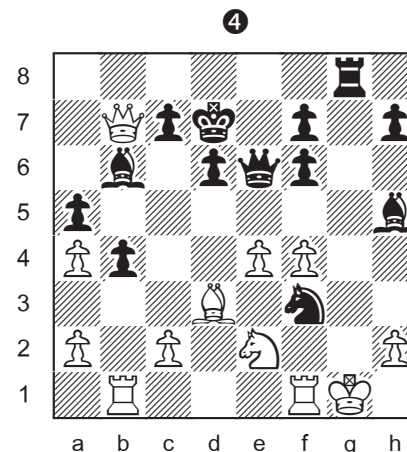
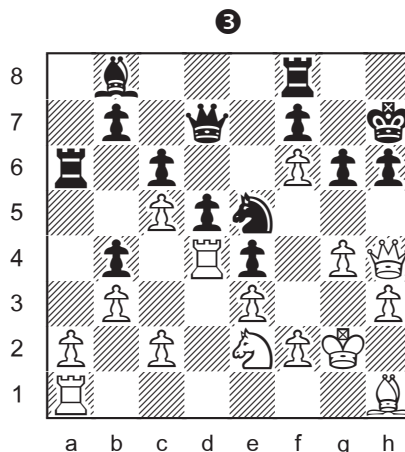
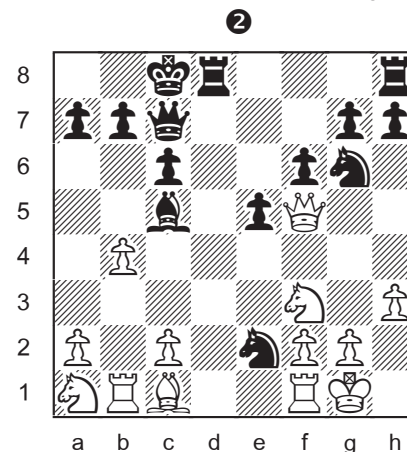
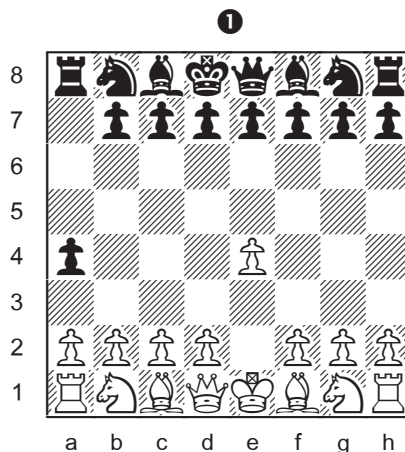
CANADIAN QUEENS

1	YUAN Yuanling	2286	ON
2	KAGRAMANOV Dalia	1682	ON
3	ROY Myriam	1678	QC
4	ORLOVA Yelizaveta	1658	ON
5	BOTEZ Alexandra	1566	BC
6	WANG Kelly	1516	QC
7	XIONG Sonja	1440	ON
8	SAULNIER-LEGAULT Lea	1440	QC
9	PENG Jackie	1426	ON
10	KALAYDINA Regina	1424	AB

WHO'S THE GOOF?



Hey there, smart people! Somebody messed up here. In each of the diagrams below, there is something wrong. The positions are illegal. Can you find the goof? solutions page 50



CANADIAN CHESS CHALLENGE



2010 National Scholastic Championship

The Chess'n Math Association, Canada's national scholastic chess organization, is proud to announce the 22nd annual Canadian Chess Challenge. We hope that you and your friends can take part this year.

The competition is in four stages: school, regional, provincial, and national. The finals will take place on Victoria Day weekend in Montreal, Quebec.

For information on how to enter your school in the Chess Challenge, contact your provincial coordinator.

Alberta

Bruce Thomas
(780) 473-1557

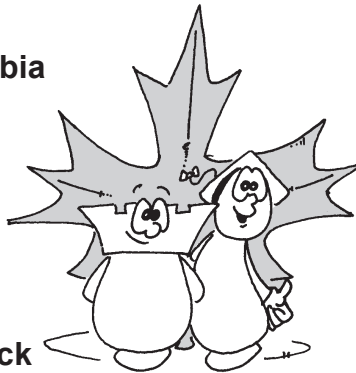
PROVINCIAL COORDINATORS

Nova Scotia

Stirling Dorrance
(902) 678-4453

British Columbia

Ken Jensen
(604) 728-7491



Ontario

Leslie Armstrong
(905) 841-1342

Manitoba

Peter Henson
(204) 256-6150

Prince Edward Is.

Bill Pitre
(902) 569-2989

New Brunswick

Ghislaine Johnson
(506) 388-5251

National Office

3423 St. Denis #400
Montreal, Quebec
H2X 3L1
(514) 845-8352

Newfoundland

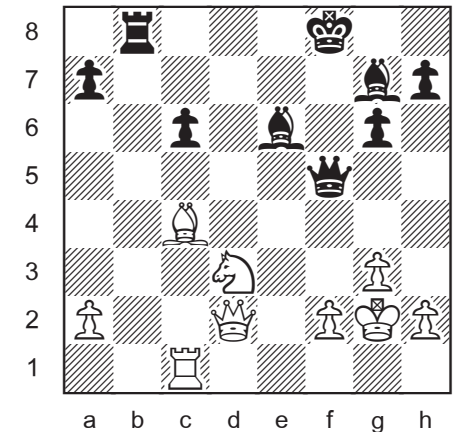
Chris Dawson
(709) 747-5217

Saskatchewan

Don MacKinnon
(306) 445-8369

COMBO MOMBO !!

SPOTLIGHT ON QUEEN FORKS

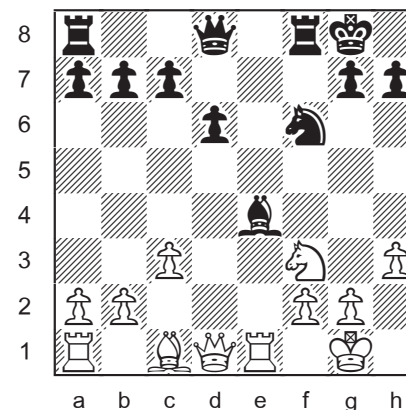


Hello, combo friends.

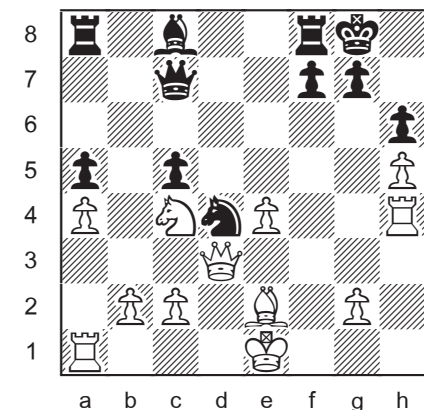
A great way to win material is with a fork (attacking two pieces at the same time). The queen's power to move in 8 directions makes her an excellent forker.

♔ In this example, after 1.Bxe6! Qxe6, white forks the black king and rook by 2.Qf4+! Ke7 3.Qxb8.

♚ But if black goes first, they win with a fork of their own. 1...Bxc4! 2.Rxc4 Qd5+! 3.Kg1 Qxc4.



♔ WHITE TO MOVE
Win Material



♚ BLACK TO MOVE
Win Material

solutions page 50

TACTICS 101

FIND THE QUEEN FORKS

White to move. Win material.

solutions page 50



TACTICS 101

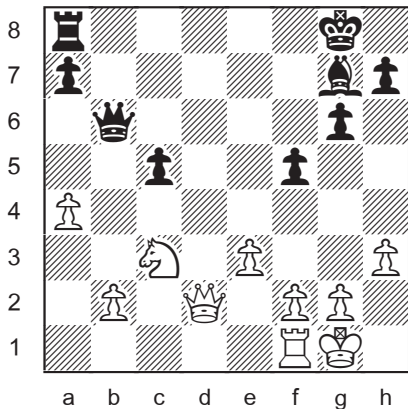
FIND THE WINNING MOVE

White to move. Win material or mate.

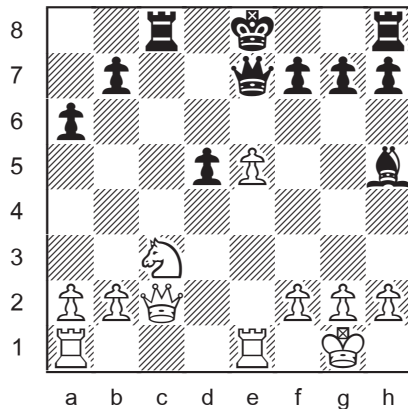
solutions page 50



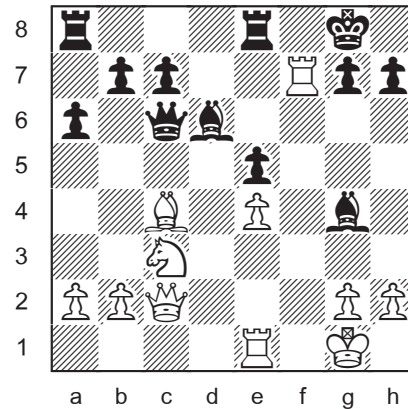
1



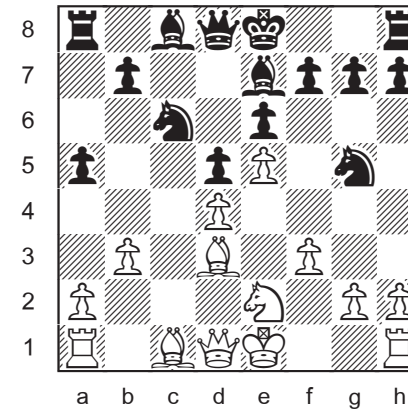
2



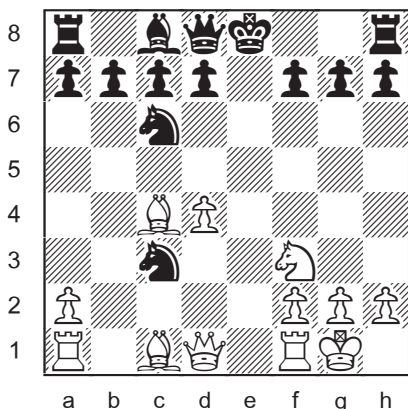
5



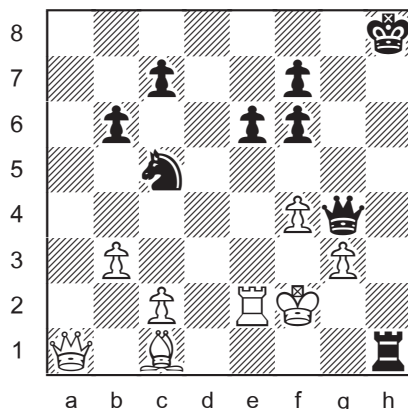
6



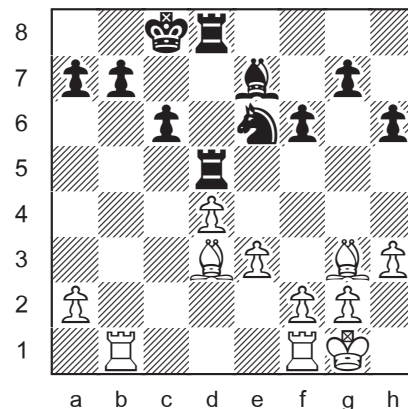
3



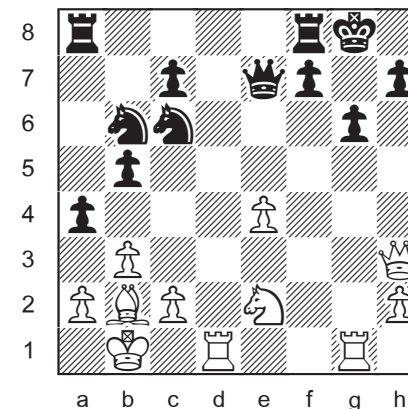
4



7



8





YVES CASAUBON

1949 - 2009

The chess world lost one of its most dedicated friends in August. For many years, Yves has been the chief director for all the top chess tournaments in Quebec. He also served as the computer expert at Chess'n Math since the organization began, developing and maintaining the rating system and webpage. Always cheerful, always helpful, always Yves.

Rest in peace.

2009 CANADIAN CHAMPIONSHIP

The University of Guelph hosted the *2009 Canadian Closed Chess Championship* August 8th to 16th. There were 31 players in the nine round event. This year's champion is IM Jean Hébert of Montreal. He won 6 and drew 3 to capture clear first place ahead of top ranked GM Mark Bluvshtein (Toronto). It's the second time that Jean has been national champion. He also won 30 years ago, in 1978!

Jonathan Tayar (Toronto), the 2005 grade 11 champion, tied for fourth place with 6 points and earned the international master title.

Two others earned the FM title: 10th grader Louie Jiang (Montreal) and 12th grader Aman Hambleton (Toronto). Way to go, guys!

CANADIAN JUNIOR

The *2009 Canada Junior Chess Championship*, held July 25-28 in Victoria B.C., was a seven round swiss tournament with 12 players.

First place, with 5½ points, went to Raja Panjwani (Kitchener). The two runners-up, half a point back, were Arthur Calugar and Artiom Samsonkin (both from Toronto).

His victory qualifies Raja for the *World Junior Championship* later this month in Argentina.

But that was not his only achievement this summer. He also completed the requirements for the international master title in September. Congratulations, IM Raja Panjwani!!



CANADIAN WOMEN

The *2009 Canadian Women's Chess Championship* took place July 30 to August 3 as part of the *Kitchener Chess Festival*.

The winner and new champion is Dina Kagrananov of Toronto. She went undefeated in the 7 player round robin, giving up only a single draw. Tying for second place were Yuanling Yuan and Nava Starr (also from Toronto).

CANADIAN YOUTH

The *2009 Canadian Youth Chess Championships* were played on July 21-24 in Victoria, B.C. 91 boys and 38 girls attended. This year's national champions and runners-up are:

<8	Kevin Wan	ON
	Daniel Zotkin	ON
	Yuanchen Zhang	ON
<10	Dezheng Kong	BC
	William Graif	ON
	Olivier Chiku-Ratte	QC
<12	Richard Wang	AB
	James Fu	ON
	Jack Qian	BC
<14	Thomas Kaminski	AB
	David Zhang	AB
	David Itkin	ON
<16	Karoly Szalay	ON
	Alexander Martchenko	ON
	Avinaash Sundar	ON
<18	Eric Hansen	AB
	Victor Kaminski	AB
	Kevin Me	SK

The 6 winners of the separate girls competition were:

<8	Jiaxin Liu	ON
<10	Melissa Giblon	ON
<12	Rebecca Giblon	ON
<14	Alexandra Botez	BC
<16	Dalia Kagrananov	ON
<18	Jasmine Du	NS

Good luck to all the Canadians at the *World Youth Championship* in Turkey next month.

KINGSTON

20 teams took part in the *2009 Ontario-Quebec Scholastic Team Tournament* held on June 6 at Queen's University.

Kindergarten - Grade 3

- Michele Provost B
Christine Gao
Louis Campagna
Justin Vittecoq
Charles Vachon

- Michele Provost A
- North Prep

Kindergarten - Grade 6


- Internationale
Hong Rui Zhu
Benjamin Sun
Lin Sheng He
Haley He

- Fernand Seguin
- Henderson

High School

- Northern
Aaron Wu
Tian Lan
Benjamin Olden-Cooligan
Daniel Zhang
- College Notre Dame
- Massey Hall



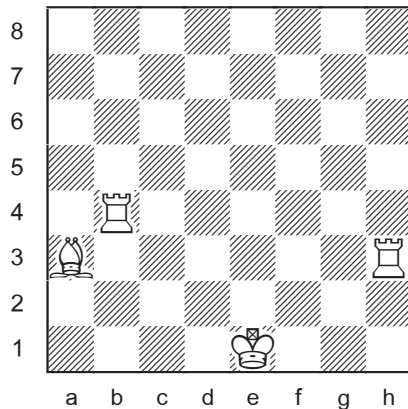
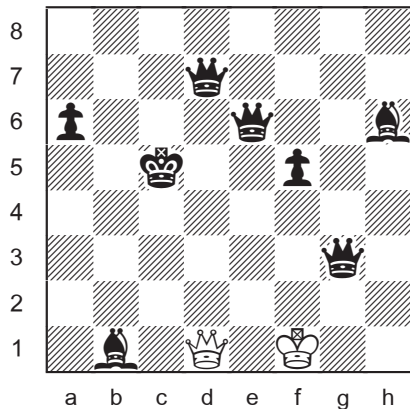


WELCOME TO MY CONTEST !

Can you solve the 4 puzzles on the next page? Mail me your answers if you do. One lucky person will win a Kiril T-shirt. White moves first in the mate problems. In case you never saw a "maze" or "loyd" before, here are some examples:

In a **CHESSMAZE** only one white piece moves. In this maze, it's the white **queen**. The object is to capture the black king without taking any pieces or moving where the queen can be taken. Draw a line to show the path of the queen. This is a **Maze in 7**. That means you should get the king in seven moves or less.

The **TRIPLE LOYD** was invented by Sam Loyd, a famous chess composer. They are called triple because there are three parts. In part **A**, you place the black king on the board so that he is in checkmate. In part **B**, place him in stalemate. For part **C**, put the black king down so that White has a mate in 1. solutions page 50



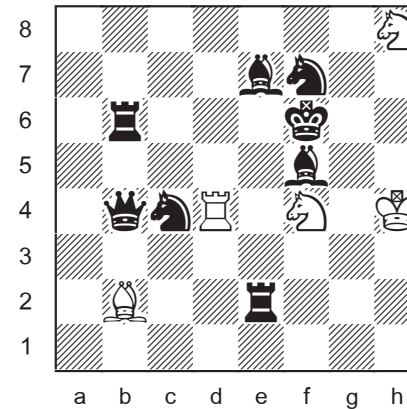
We received 3 correct solutions to June's contest.

- 1 Mate in 1 1.Qe4#
- 2 Mate in 2 1.Bd7 Kxe4 2.Bc6#
- 3 Maze Qd1-h5-h3-f1-h1-a8-c8-a6-a4xe8
- 4 Loyd A.Ka8 B.Kf7 C.Kb6 (a8=N#)

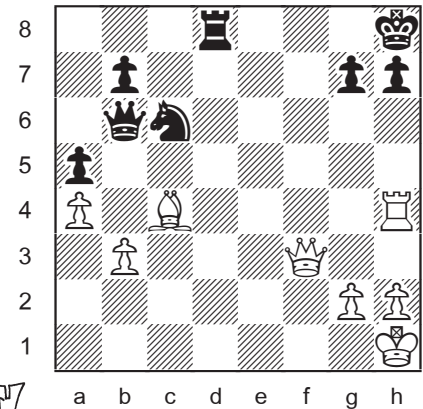
The winner of the drawing for a Kiril T-shirt is :
Kevin Zhang of Richmond Hill, Ontario

KIRIL'S KONTEST

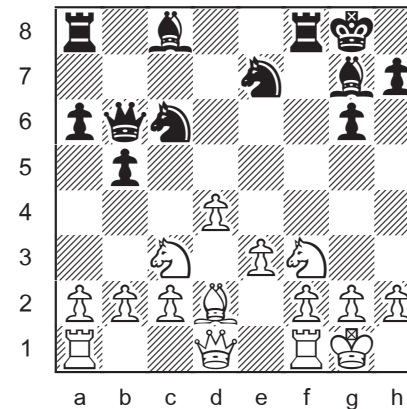
Mail entries to: 3423 St. Denis #400 Montreal, Quebec H2X 3L2
or e-mail to: kiril@chess-math.org *Deadline : November 15*



MATE IN 1

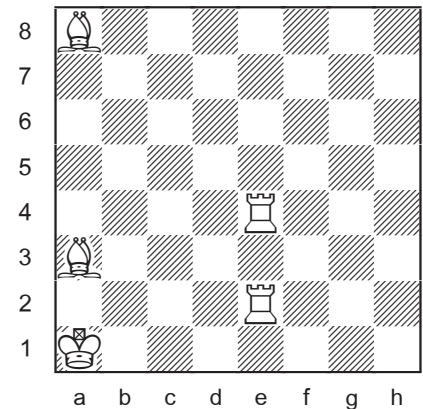


MATE IN 2



CHESSMAZE IN 9

Only the white **QUEEN** moves. Capture the black king without taking any pieces or moving where the queen can be taken.



TRIPLE LOYD

PLACE THE BLACK KING IN :

- A Checkmate**
- B Stalemate**
- C Mate in 1**

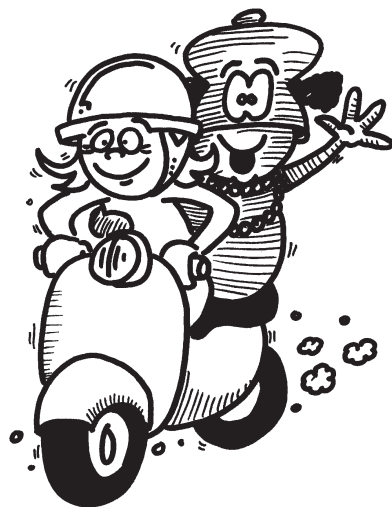
LILY'S PUZZLER

HI BOYS AND GIRLS!!

Wouldn't it be nice if we could make two moves in a row sometimes? That's what you do in these 8 puzzles.

White plays twice in a row to mate black. The first move may not be a check. Either move may be a capture. Black does not get a turn. Wham, bam, thank you, Sam!

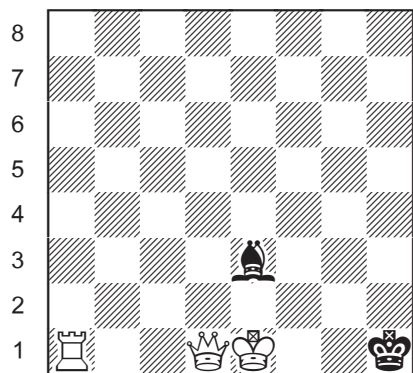
Chess composers call this kind of problem a *series mate in 2*. But "double whammy" sounds lots more fun!



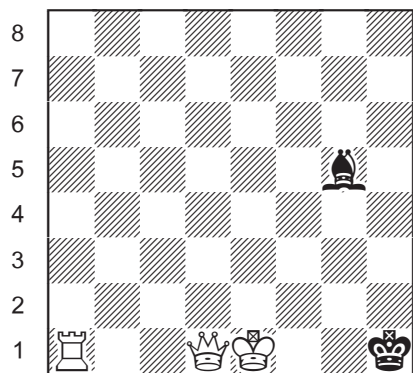
DOUBLE WHAMMY

WHITE PLAYS TWO MOVES IN A ROW TO MATE BLACK.

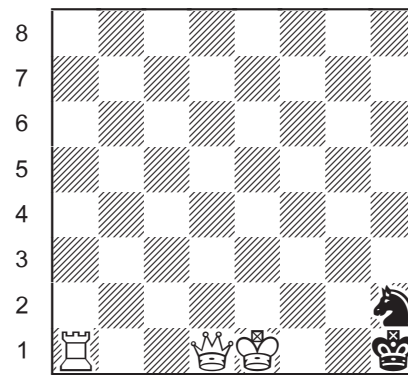
The first move may not be check. solutions page 50



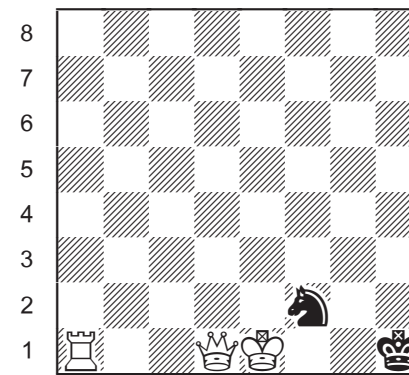
1 a b c d e f g h



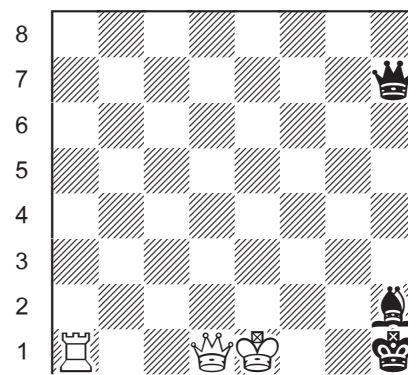
2 a b c d e f g h



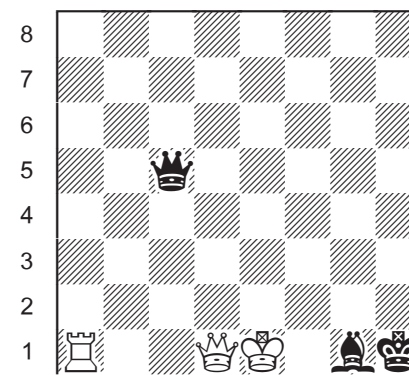
3 a b c d e f g h



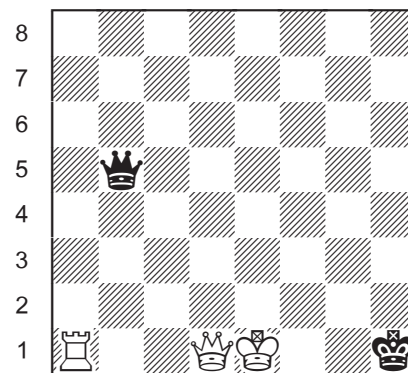
4 a b c d e f g h



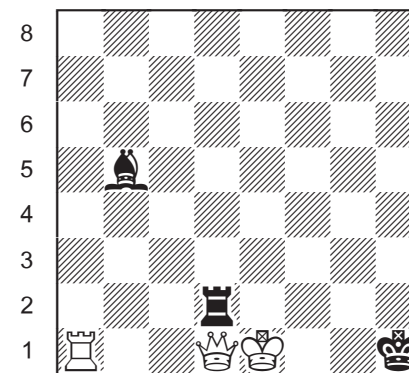
5 a b c d e f g h



6 a b c d e f g h



7 a b c d e f g h



8 a b c d e f g h

MATE IN 1

WHITE CHECKMATES BLACK
IN ONE MOVE.

solutions page 50



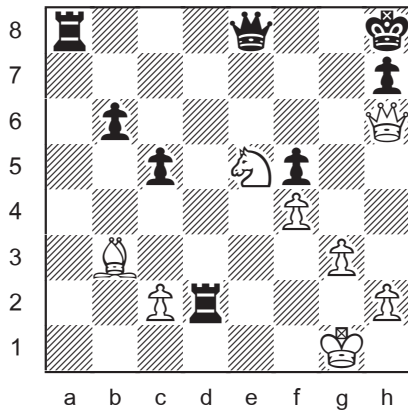
MATE IN 2

WHITE CHECKMATES BLACK
IN TWO MOVES.

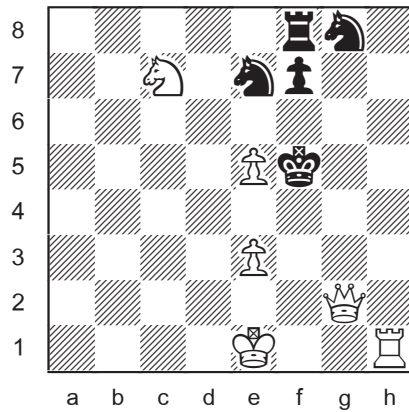
solutions page 50



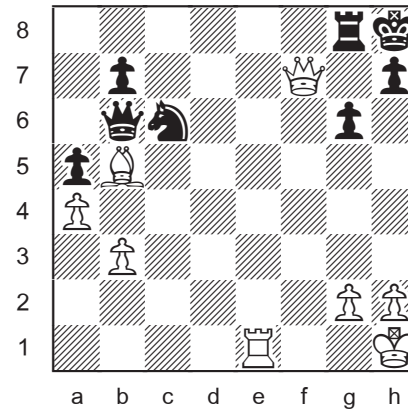
1



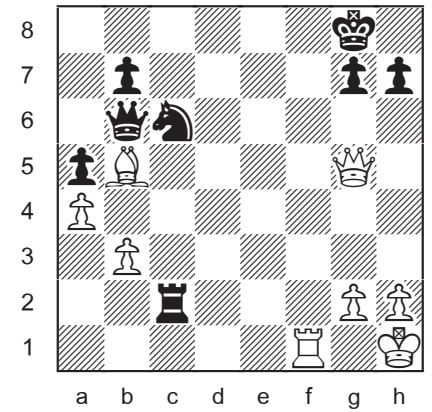
2



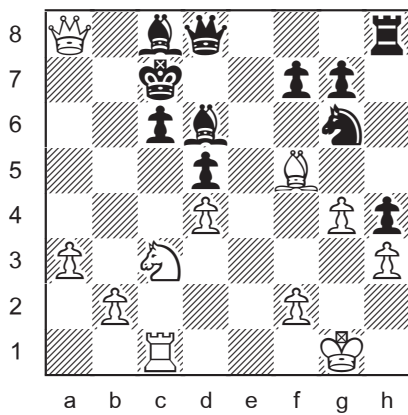
1



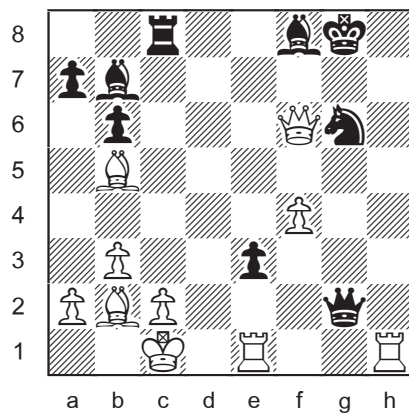
2



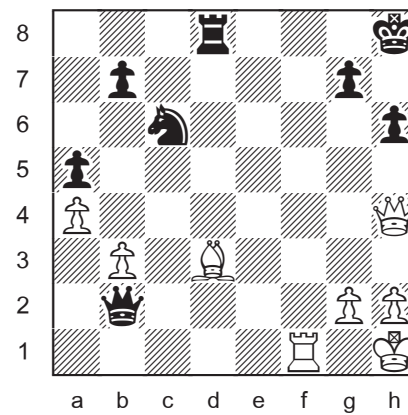
3



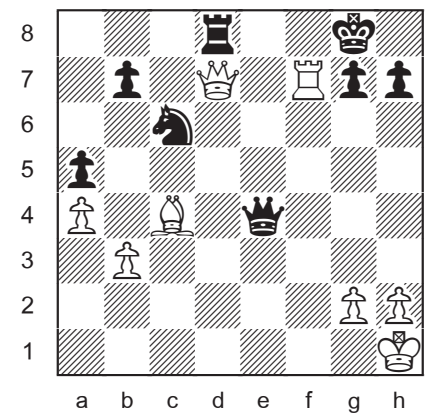
4



3



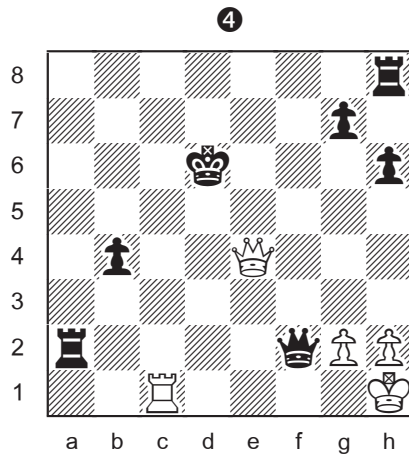
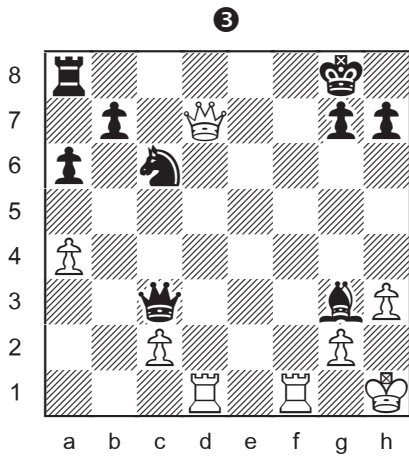
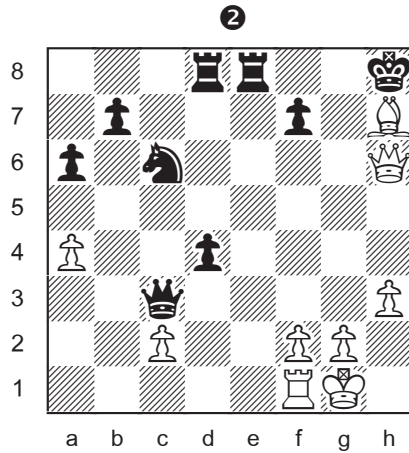
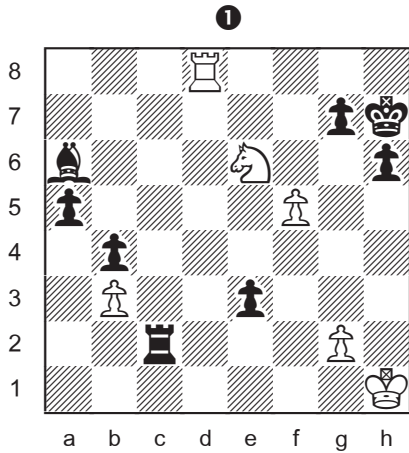
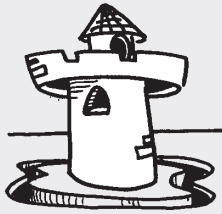
4



MATE IN 3

WHITE CHECKMATES BLACK
IN THREE MOVES.

solutions page 50

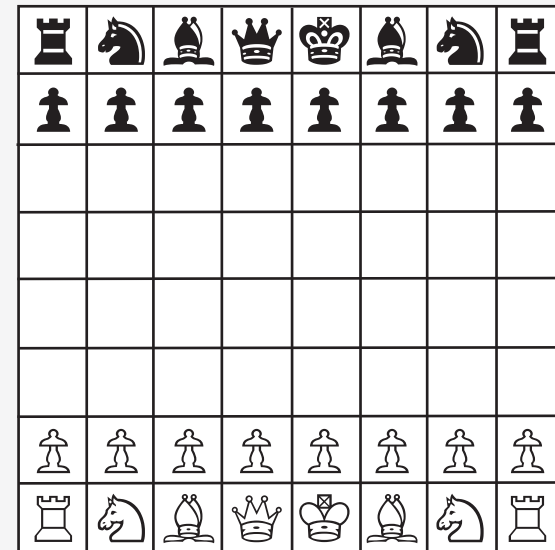


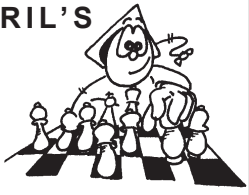
DID YOU KNOW?



When chess was invented 1500 years ago, the board was not chequered. It was not until the game came to Europe in the 12th century that colours were first added to the board.

Can you imagine playing on a board where all the squares are the same colour? I can tell you one thing: it's very tricky for us bishops!





A DAY IN CHESS COURT

The mystery began one wintery Wednesday. Kiril was walking down Maple Street, just minding his own business. All the stores were closed for the holiday, so the city was quiet as a mouse. In fact, Kiril went several blocks without seeing a single soul.

But when he passed the museum, he heard an alarm. Suddenly, someone ran around the corner and shoved a plastic bag into Kiril's hands. Before he could see who it was, they were gone.

The next thing he knew, a squad of police cars came roaring out of nowhere and the street was full of cops. Lights were glaring; sirens were blaring. And poor little Kiril, he was left holding the bag.

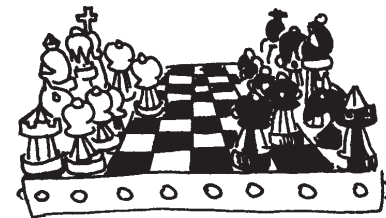
It wasn't a holiday anymore. The police had him surrounded. The one with the megaphone shouted, "Okay, pawn, raise your arms! You're under arrest."

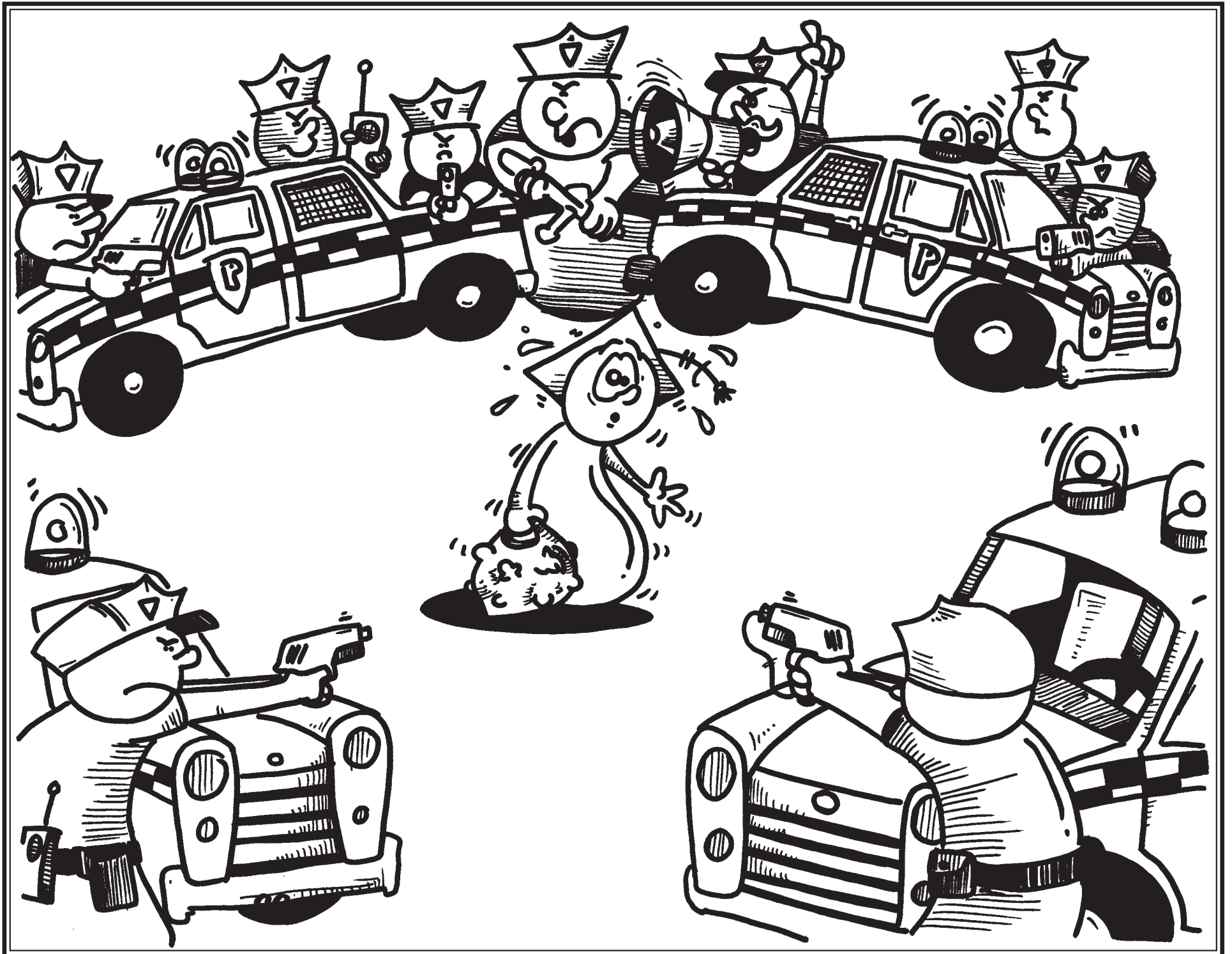


Kiril put down his unwanted present and put up his hands. They were shaking like palm trees in a hurricane.

On the ride to the station, he learned what they found in the bag: half of a peanut butter and banana sandwich! Plus, the famous *Blue Lunar Chess Set* that was missing from the museum. Uh-oh!

The following day, Kiril was on trial. His lawyer, Biff the B, was there to defend him.







When they got to the courtroom, a voice greeted them. "All rise for the honourable Chester C. Mudd."

The judge came in and took his place behind the bench. After he got his wig straightened up, he said, "Please be seated. Chess Court is now in session."

Kiril was scared, especially with Biff for a lawyer, but at least the judge seemed like a friendly man.

Judge Mudd glanced down at Kiril and frowned. "Our first case today is *Canada versus Kiril the Pawn*. What are the charges?"

The bailiff was an old rook called Officer Bailey. He answered, "Your honour, there are two charges. The first is grand theft. He is accused of stealing a valuable chess set from the museum. The other charge is a violation of the touch move rule."

Kiril was puzzled by that second part. But before he could say anything, the judge interrupted him. "This is very serious, Kiril. How do you plead?"

"Not guilty, your honour."

"Does your attorney have anything to say?"

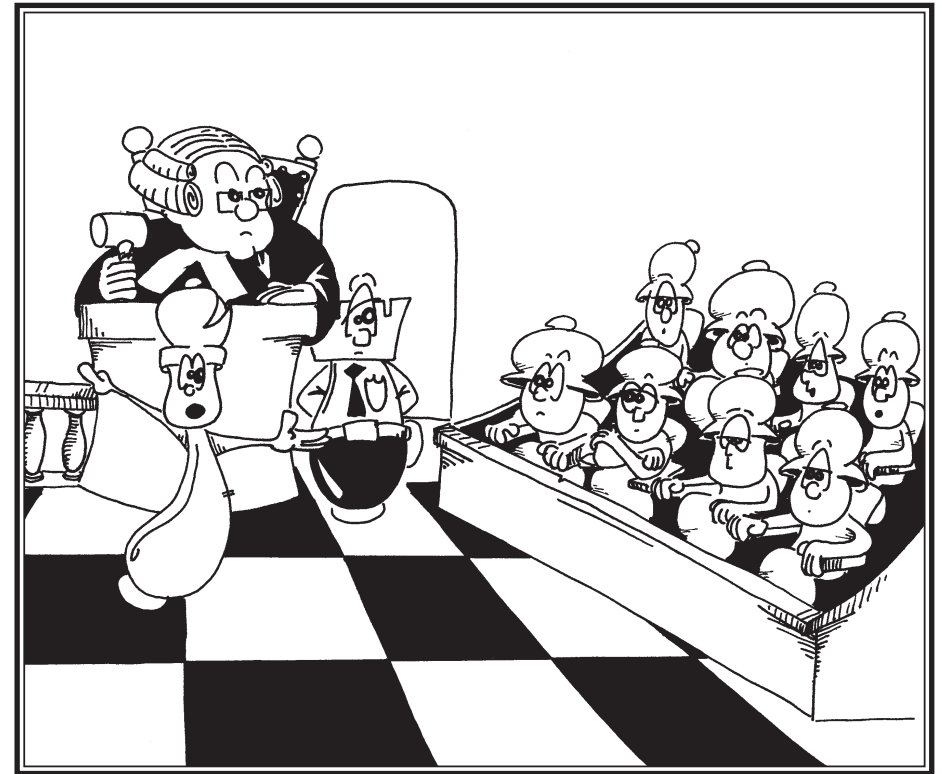
Biff jumped up and cleared his throat. "Yes sir, your judgeship. I have to confess. My client is guilty. He didn't follow the touch move rule. It happened last night in a game against me at the police station. That's why I filed a complaint against him!"

Judge Mudd raised his eyebrows and said, "I see."

Then Biff added, "But you know what, judge? I really don't think he stole that chess set. He's not crazy."

The judge was not convinced. After all, Kiril was crazy enough to let Biff defend him! Judge Mudd didn't say anything though. Instead he asked Bailey to tell the jury about the *Blue Lunar Chess Set*.

"Yes, your honour. As we all know, the set was discovered on the moon many years ago by a lost astronaut. However, no one has ever explained how it



got there. The pieces are made of polished blue crystal with diamond studs and solid gold bases. Its value today is 10 million dollars.”

A hush filled the courtroom when they heard how much it was worth. The judge banged his gavel and said, “Thank you, Officer Bailey. It’s time to call our next witness now. Kiril the Pawn, take the stand.”

“Kiril, do you swear to tell the truth?”

“I’m sorry, your honour. My mother told me never to swear. I do promise to tell the truth. Is that okay?”

“That’s fine, Kiril. Can you please explain what happened last night with the touch move rule?”

“Well, your honour, we were playing blitz and my handcuffs knocked the king over. So I set it back up and moved my queen like I planned. But Biff insisted that I had to move the king. When I told him it was an accident, he said that didn’t matter. Anyhow, I finally gave up trying to argue with him and moved my king. He’s just mad because I beat him anyways!”

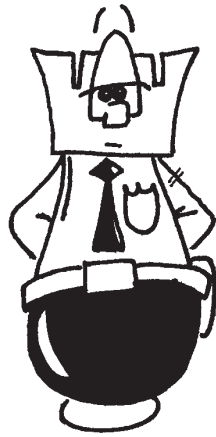
The judge chuckled, “Is that right, Mr. B?”

Biff sank down in his chair and muttered, “Yes, sir.”

Judge Mudd grinned at the jury before he spoke to the witness again. “Let’s talk about the theft, Kiril. You were the only one at the scene of the crime. And they arrested you holding the stolen property.”

“I know, your honour. But it’s like I told the police. There was someone else there. It’s just that he was going so fast we couldn’t see him.”

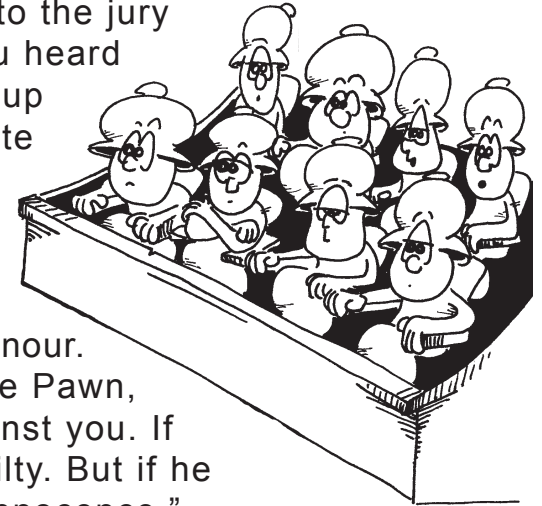
“Perhaps it was an invisible pawn, eh?”



“Maybe, sir. There has to be some explanation.”
“Well, Kiril. Nobody ever saw an invisible pawn!”
He was only half-joking. To him, the facts in the case were clear. “That’s all, Kiril. Please step down.”

Judge Mudd turned to the jury and said, “Friends, you heard the evidence. It’s now up to you to decide the fate of your fellow pawn. What is your verdict?”

The leader of the jury rose to his feet. “Our choice is easy, your honour. The defendant, Kiril the Pawn, has to play chess against you. If he loses, then he’s guilty. But if he wins, that proves his innocence.”



The judge thanked them for their wise decision and instructed Bailey to set up a chess board.

“Time for justice, Kiril. Are you ready?”

“I’m ready, your honour. Too bad we can’t play with the *Blue Lunar* set. It’s cool! By the way, are we playing touch move?”

“Yes, Kiril, it’s the law.”

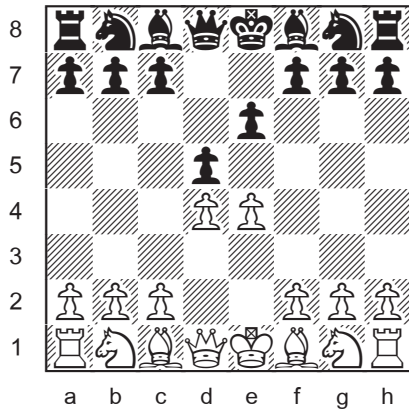


Characters and events in this story are fictional. Any resemblance to real chess pieces or actual people is not intentionally funny.

White **JUDGE MUDD**
 Black **KIRIL the PAWN**

1. e4 e6
2. d4 d5

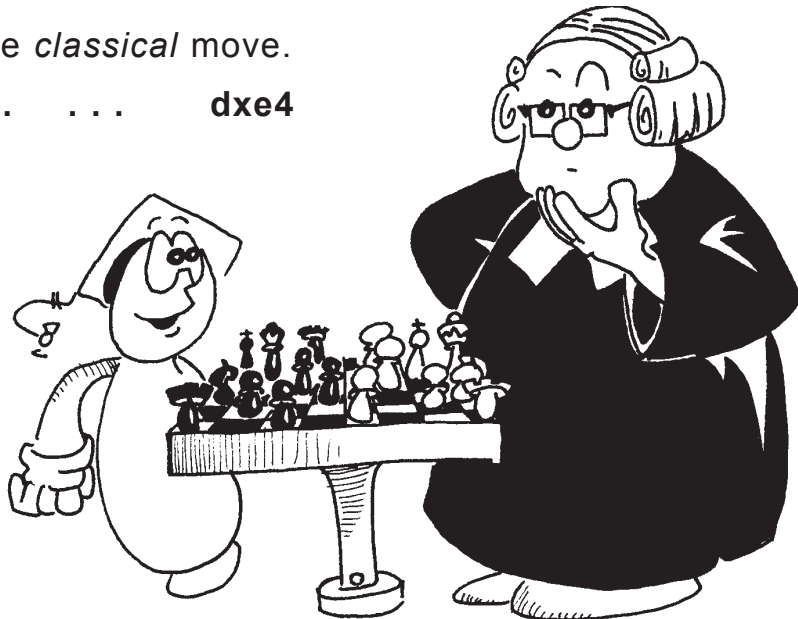
Our hero states his case with the *French Defence*.



3. Nc3

The *classical* move.

3. ... dxe4



Kiril gives up the centre and aims for safe play with easy development.

Biff the B walked over to get a better view of the game and Kiril said, "Hey, this isn't so bad. Maybe the judge is no good at chess."

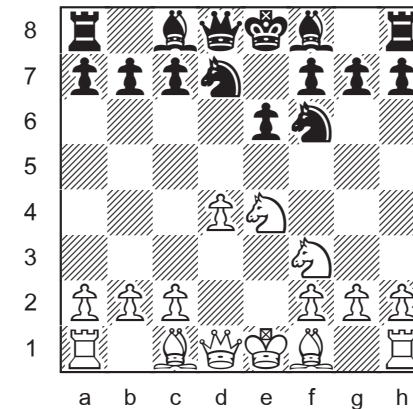
"Well, Kiril, I hate to tell you this, but Chess is his middle name!"

"Oops!"

4. Nxe4 Nd7

The knight goes here to back up the other knight when it comes out.

5. Nf3 Ngf6



6. Nxf6+ Nxf6

Kiril is glad because he kept a knight on f6 to defend his king.

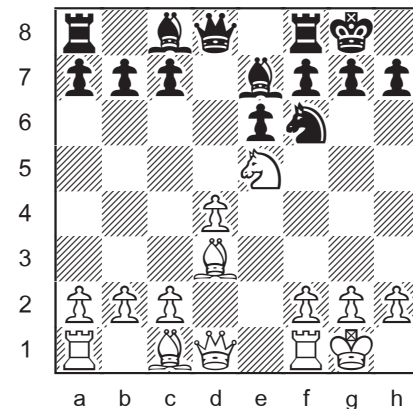
7. Bd3 Be7

8. O-O O-O

With his king castled, Kiril is all set to start some queenside action.

9. Ne5!

Judge Mudd occupies the knight *outpost* at e5.



Biff thought he had an idea. "Your honour, may an attorney take a turn?"

"No, Mr. B., that is not proper procedure."

9. ... c5

"Oh, Kiril! You missed it! You could have taken his pawn for free!"



"Please, Biff, just let me concentrate, okay? That's a *poison pawn*. If I played 9...Qxd4?, he can win my queen with the *discovered attack* 10. Bxh7+!"

"Oops!"

10. dxc5 Bxc5?!

Kiril's plan to get rid of the judge's centre pawn was a success. But the bishop defends better if it stays on e7. The best move was 10...Qc7!

11. Qe2!

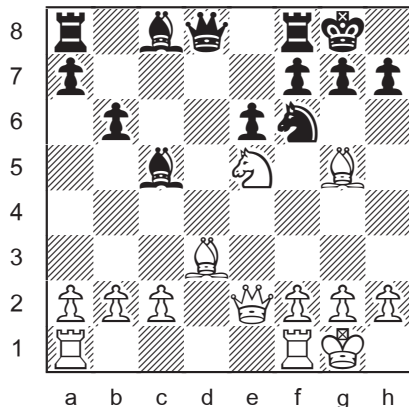
Guarding his knight and clearing d1 for a rook.

11. . . . b6

Kiril wants control of the long light diagonal and prepares to *fianchetto* his bishop at b7.

12. Bg5!

The judge knows a good *pin* when he sees one!

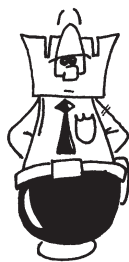


12. . . . Bb7

Not 12...Be7? 13.Nc6! Qc7 14.Nxe7+ Qxe7 15.Bxf6 Qxf6 16.Qe4! g6 17.Qxa8.

13. Rad1

Bailey nodded his approval when he saw the rook line up against the black queen.



13. . . . Qe7

Kiril gets off of the d-file but not out of the pin.

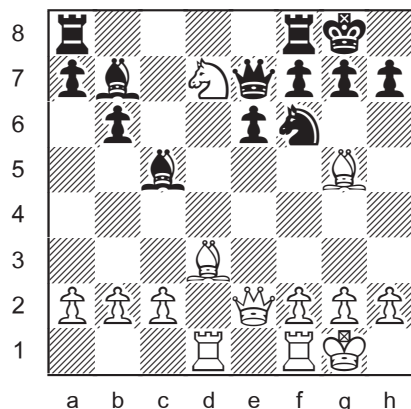
Judge Mudd sat rubbing his chin for a long time before he made his next move. And what a move it was!

14. Nd7!

“Holy knight, Biff! Look what he played.”

“It’s a free piece, eh?”

The judge said, “Mr. B, you’re out of order. Be quiet or I’ll remove you from the courtroom.”



Kiril leaned over and whispered in his lawyer’s ear. “It’s another trap, Biff! If I take the knight, then I lose my queen!”

Biff the B pondered the situation, then stood up.

“Your honour, I object!”

“To what, Mr. B?”

“To your knight move, sir. It’s too good!”

The judge smiled and hammered his gavel on top of Biff’s head! “That was a legal move, Mr. B! You’re overruled.”

14. . . . Rfd8

Black saves his rook and waits for the trouble to start on f6. Things don’t look good for Kiril.

Actually, 14...Qxd7 was not so bad. Black gets 3 pieces for the queen after 15.Bxh7+ Nxh7! 16.Rxd7 Bc8! 17.Rc7 Nxc5 with an unclear position.

Trickier is 15.Bxf6!? Qc6! 16.Qg4 Qxg2+!? 17.Qxg2 Bxg2 18.Kxg2 gxf6 when black is up a pawn.

15. Bxf6 gxf6

Doubled pawns and an open door to his king’s castle. It made Kiril feel guilty about the way he was playing!

Now he expected the judge to continue 16.Qh5, aiming for a mate on h7.

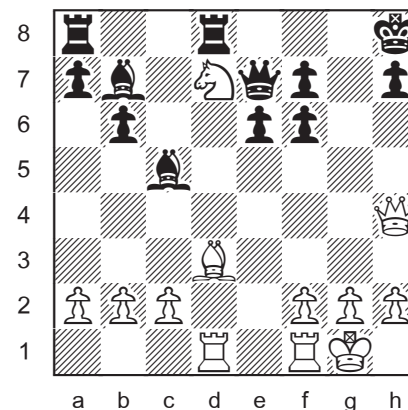
He hoped to hold on then by 16...f5.

Unfortunately for Kiril, Chester C. Mudd has a more powerful idea.

16. Qg4+! Kh8

17. Qh4!

Threatens mate at h7 and guards the key f6 square!



17. . . . f5



This pawn move avoids an immediate mate. But the black defences are no match for the white queen and knight.

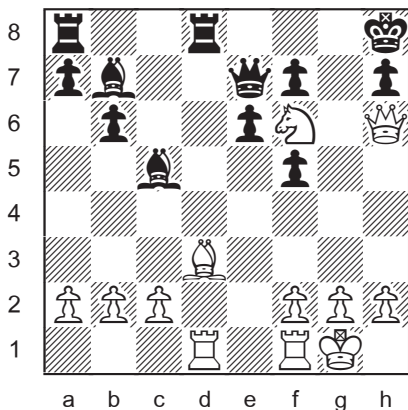
18. Nf6! Kg7

19. Qg5+ Kh8

Justice is speedier after 19...Kf8 20.Qg8#.

20. Qh6

Here comes the judge!



“Uh-oh, Kiril. Your name is mud now!”

“No, Biff, his name is Mudd. My name is dead meat! I have to give up my queen to stop mate.”

20. . . . Qxf6

21. Qxf6+ Kg8

22. Bxf5!

No mercy from this judge!

22. . . . Rxd1

Just as bad is 22...exf5 23.Rxd8+.

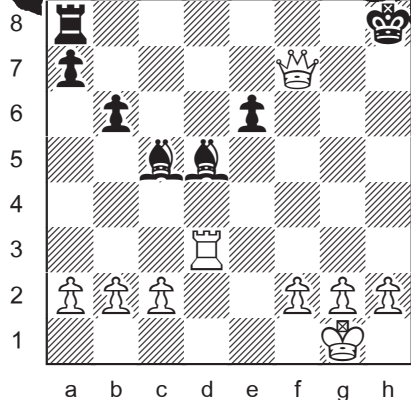
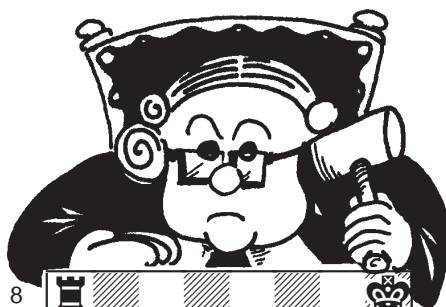
23. Bxh7+! Kxh7

24. Qxf7+ Kh8

25. Rxd1 Bd5

26. Rd3 1 - 0

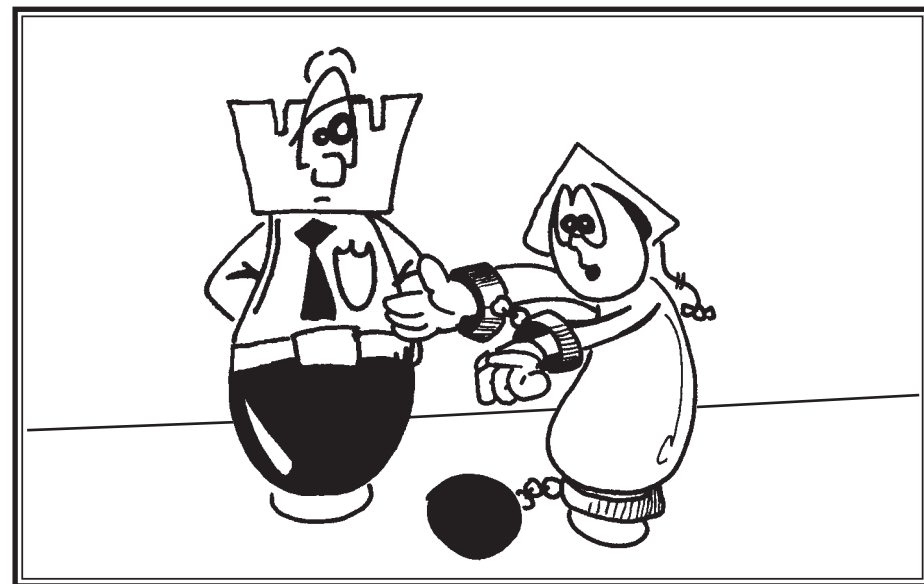
Kiril resigned. There’s no way to prevent Rh3#.



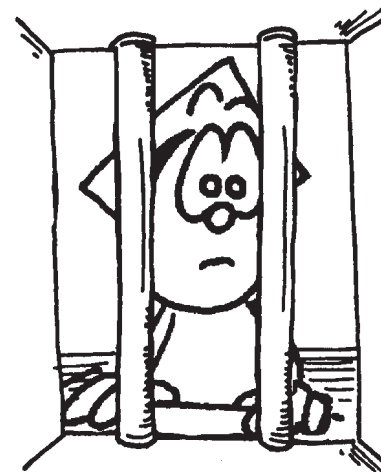
“Any final words, Kiril, before I make a ruling?”

“Yes, your honour. You played a great game!”

“Thank you. It’s my duty to play chess well.”



Then Judge Mudd paused for a moment of silence. “Kiril the Pawn, I find you guilty as charged. You are hereby sentenced to 10 years of hard labour at the federal chess prison. Officer Bailey, please take the prisoner away!”



TO BE CONTINUED ...



TOURNAMENTS FOR KIDS

TORONTO

Chess'n Math 416 488-5506

Marshall McLuhan Sec. School
1107 Avenue Rd.

registration 10:00 - 11:00 am

November 15 *Grand Prix* Sunday

registration 11:30 - 12:00 pm

October 25 Sunday

December 13 Sunday

TORONTO

Natalia Khoudgarian 879-7300

Swansea Town Hall
95 Lavinia Ave.

registration 12:30 - 1:00 pm

Every Saturday starting Sep. 20

THORNHILL

Yuri Lebedev 905 370-2299

Knights Of Chess
5635 Yonge St. Suite 201

check-in 4:00 - 4:30 pm
pre-registration required

Every Sunday

except for major CMA events

CORNWALL

Raymond Lacroix 613 938-6364

Cornwall Public Library

registration 12:00 - 12:45 pm

November 7 Saturday

December 5 Saturday

OTTAWA

Brad Thomson 613 565-3662

RA Centre Outaouais Room
2451 Riverside Drive

registration 12:00 - 1:00 pm

October 18 Sunday

November 22 Sunday

December 20 Sunday

GUELPH

Hal Bond 519 822-2162

Guelph University Centre
room 441

registration 12:30 - 1:00 pm

October 24 Saturday

November 14 Saturday

December 12 Saturday

KITCHENER

Patrick McDonald

patrick@psmcd.net

Kitchener City Hall
200 King St. W.

registration 12:30 - 1:00 pm

November 15 Sunday

December 13 Sunday



ALL EVENTS ARE SCHOLASTIC RATED.

MONTREAL

Chess'n Math 514 845-8352

Lucien Pagé High School
8200 St. Laurent Boulevard
registration 11:15 - 11:45 am

October 18 Sunday

November 1 Sunday

November 15 *Grand Prix* Sunday

MONTREAL SCHOOL TEAM TOURNAMENTS

Jean de Brebeuf College
3200 St. Catherine

Saturday

December 5 K-3, Gr.7-11

Sunday

December 6 K-6

4 Players From Same School
information: Chess'n Math
514 845-8352

VICTORIA

Brian Raymer 250 595-0025

University of Victoria
Human Social Devel. Bldg

registration 9:30 - 9:45 am

October 25 Sunday

November 15 Sunday

December 6 *City Champ.* Sunday

CALGARY

Simon Ong 403 274-2954

EDMONTON

Bruce Thomas 780 473-1557

SASKATOON

Don MacKinnon 306 445-8369

WINNIPEG

Peter Henson 204 256-6150

University of Winnipeg
Duckworth Centre room 2D11
515 Portage Ave.

registration 12:15 - 12:45 pm

October 18 Sunday

November 8 Sunday

December 6 Sunday

HALIFAX

Cheryl Weaver 902 443-6940

Mount Saint Vincent University
166 Bedford Hwy
Rosaria Centre

registration 12:00 - 12:30 pm

November 1 Sunday

November 29 Sunday

CHARLOTTETOWN

Bill Pitre 902 569-2989

Colonel Gray High School
175 Spring Park Rd.

registration 12:00 - 12:50 pm

November 15 Sunday

December 6 Sunday

SUMMERSIDE P.E.I.

Bill Pitre 902 569-2989

Waterfront Place
98 Water St.

registration 12:00 - 12:50 pm

October 24 Saturday

November 21 Saturday

ST. JOHN'S

Chris Dawson 709 747-5217

Cowan Heights Elementary

November 11 Wednesday

CANADIAN CHESS CHALLENGE

TEAM STATISTICS

1989 - 2009

TOTAL GAMES PLAYED 11193 MOST CHAMPIONSHIPS ONTARIO 13
TOTAL PLAYERS 2490 MOST GOLD ONE YEAR ONTARIO 9

STANDINGS

	AVERAGE PLACE	AVERAGE % SCORE	BEST % SCORE	HIGHEST PLACE	LOWEST PLACE
ONTARIO	1.5	81	90	1	3
QUEBEC	1.7	79	88	1	3
BRITISH COLUMBIA	3.2	63	75	2	5
ALBERTA	4.3	53	60	3	7
MANITOBA	5.7	47	58	3	8
NEW BRUNSWICK	6.0	45	61	3	8
NEWFOUNDLAND	6.5	42	56	4	9
NOVA SCOTIA	8.2	34	44	6	10
SASKATCHEWAN	8.5	35	47	6	10
PRINCE EDWARD ISLAND	9.5	23	44	7	10

MEDALS

	GOLD	SILVER	BRONZE	TOTAL	WEIGHT*	MOST 1 YEAR
ONTARIO	101	71	29	201	474	12
QUEBEC	75	70	49	194	414	12
BRITISH COLUMBIA	35	31	43	109	207	8
ALBERTA	15	19	33	67	116	6
MANITOBA	7	23	18	48	85	4
NEW BRUNSWICK	3	11	30	44	61	5
SASKATCHEWAN	5	9	15	29	48	3
NEWFOUNDLAND	3	5	22	30	41	4
NOVA SCOTIA	5	9	8	22	41	3
PRINCE EDWARD ISLAND	1	2	6	9	13	3

* GOLD = 3 SILVER = 2 BRONZE = 1

MOST IMPROVED TEAMS

MORE POINTS SCORED

1999 Nova Scotia	+ 25½
1997 Alberta	+ 16
2001 Nova Scotia	+ 14½
1993 Manitoba	+ 13
1994 Ontario	+ 12½
2007 Alberta	+ 12

BIGGEST JUMP IN STANDINGS

1990 Alberta	7th to 4th
2005 Nova Scotia	9th to 6th
1999 Nova Scotia	10th to 7th
2002 MB	5th to 3rd
2006 MB	5th to 3rd
2007 AB	5th to 3rd
1993 NF	7th to 5th
2000 MB	8th to 6th
2009 NB	8th to 6th
1993 PE	9th to 7th
2000 SK	9th to 7th
2001 NS	9th to 7th
2003 NF	9th to 7th
2004 SK	9th to 7th

Only teams to jump two or more places.

RATINGS

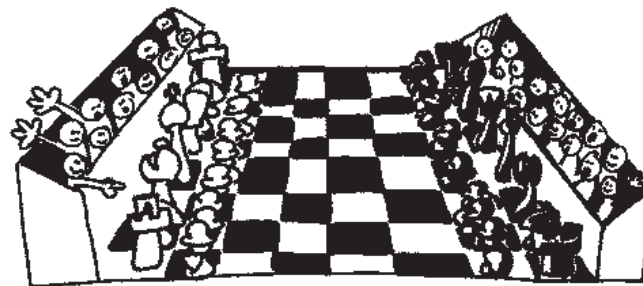
Scholastic ratings for all players who have taken part in a CMA tournament during the last three years can be found on the *Chess'n Math Association* webpage:

www.chess-math.org

Click the "ratings" tab on the homepage, which will take you to the *ratings page*:

www.chesstalk.com/elo/pub

Once on the *ratings page*, with Kiril and the map of Canada, you can search ratings by name, province, age, or grade! You can also see a list of recently rated tournaments at the bottom of the page. Click on the tournament to see a crosstable of the event.



For information on how to rate your tournaments:

www.chess-math.org/ratings/rate.htm



HEY, FRIENDS!
I'M ON THE INTERNET TOO.

You can write me a letter
or enter my contest at:

kiril@chess-math.org

* SOLUTIONS *

MATE IN 1

- 1.Qf6#
- 1.Rh5#
- 1.Nxd5#
- 1.Qe6#

TRIPLE LOYD

- Ke3
- Kc2
- Kg1 (Rg4#)

CHESSMAZE

Qd1-h5-h1-a8-h8-a1-a5xc5

TACTICS 101

- 1.Qd5+ (forks Kg8 & Ra8)
- 1.Qf5 (forks Bh5 & Rc8)
- 1.Qe1+ (forks Ke8 & Nc3)
- 1.Qa8+ (forks Kh8 & Rh1)
- 1.Rxc7+ (wins Q)
- 1.h4 (traps Ng5)
- 1.Bc4 (1...Ra5 2.Bxe6+)
(1...Rd6 2.Bxd6)
- 1.Qc3 (threats: Qg7# & Qxc6)

MATE IN 2

1. Qf6+ Rg7 2.Re8#
1. Qd5+ Kh8 2.Rf8#
1. Qxd8+ Nxd8 2.Rf8#
1. Rf8+ Kxf8 2.Qf7#

MATE IN 3

1. Nf8+ Kg8 2.Ng6+ Kh7 (2...Kf7 3.Rf8#) 3.Rh8#
1. Bg6+ Kg8 2.Qh7+ Kf8 3.Qxf7#
1. Qf7+ Kh8 2.Qf8+ Rxf8 3.Rxf8#
1. Rc6+ Kd7 2.Qe6+ Kd8 3.Rc8#

COMBO MOMBO

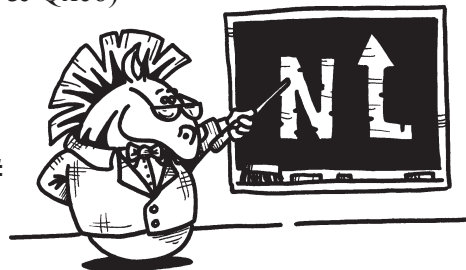
- 1.Rxe4 Nxe4 2.Qd5+ Kh8 3.Qxe4
- 1...Nxc2+ 2.Qxc2 (2.Kf2 Nxa1)
2...Qg3+ 3.Kf1 Qxh4

WHO'S THE GOOF?

- The black K & Q are switched.
- Both kings are in check.
- White has 9 pawns.
- White is in triple check.

LILY'S PUZZLER

- 1.Kf1 2.Qh5#
- 1.Qd2 2.O-O-O#
Yes, you can castle
in chess problems!
- 1.Qh5 2.Kf2#
- 1.Qd6 2.Kxf2#
- 1.Kf1 2.Qf3#
- 1.Ra2 2.Qf3#
- 1.Qe2 2.O-O-O#
- 1.Qe2 2.Kxd2#



CANADA TOP TEN

GRADE 1

1 LIN Kaining	965	AB
2 BILODEAU-SAVARIA Carl-W.	825	QC
3 KOSASHVILI Yoav	771	ON
4 LAI William	745	QC
5 JU Larry	650	ON
6 KHUMSI Samy	615	QC
7 ST-ONGE Mathieu	614	QC
8 NORMAN Jeremy	580	PEI
9 ZHANG Taylor	568	ON
10 LORTIE Isaac	532	QC

GRADE 2

1 MA Derek	986	MB
2 ZHAO Yue Tong	972	ON
3 ZHANG Michael	969	ON
4 YIP Matthew	906	QC
5 ROBERTSON Sean	905	AB
6 TOLENTINO Patrick	886	AB
7 HU Henry	880	ON
8 FAN Run Kun	873	QC
9 BILODEAU-SAVARIA Carl-E.	867	QC
10 TABBITT Julian	824	ON

GRADE 3

1 MCCULLOUGH Ian	1357	AB
2 SUN Benjamin	1297	QC
3 ZHANG Evan	1283	QC
4 ZOTKIN Daniel	1261	ON
5 MAULUCCI Anthony	1259	ON
6 GUGEL Brett	1254	ON
7 HUANG Junhao	1208	QC
8 WAN Kevin	1205	ON
9 ZHANG Yuan Chen	1180	ON
10 MAWANI Adam	1099	AB

GRADE 4

1 WANG Kelly	1516	QC
2 BELLISSIMO Joseph	1515	ON
3 KASSAM Jamil	1386	AB
4 SHI Ling Yun	1363	QC
5 RUPPA-KASANI Vikram	1269	AB
6 BILODEAU-SAVARIA Cendrina	1237	QC
7 VORA Hanz	1232	ON
8 AKHVERDIEV Artyom	1179	AB
9 CHAN Destin	1157	AB
10 NICULESCU Andrei	1153	AB

GRADE 5

1 HUANG Zhonglin	1610	AB
2 KONG Dezhong	1580	BC
3 CHIKU-RATTE Olivier	1554	QC
4 ZHU HongRui	1549	QC
5 SHI Diwen	1520	AB
6 DOKNJAS John	1436	BC
7 MAH Richard	1411	AB
8 HOFFNER Noah	1401	AB
9 WEI William	1375	AB
10 SONG Michael	1358	ON

GRADE 6

1 DORRANCE Adam	1540	NS
2 PLOTKIN Mark	1528	ON
3 BRICHKO Mike	1518	QC
4 MCCULLOUGH David	1483	AB
5 SWIFT Ryne	1477	MB
6 PAVLIC Stephen	1452	AB
7 PENG Jackie	1426	ON
8 SITU Dennis	1413	AB
9 CHAN Dante	1402	AB
10 YANG Tony	1295	AB

ROOKIE ROLL (TOP K-6)

1 HUANG Zhonglin	1610	AB
2 KONG Dezhong	1580	BC
3 CHIKU-RATTE Olivier	1554	QC
4 ZHU HongRui	1549	QC
5 DORRANCE Adam	1540	NS
6 PLOTKIN Mark	1528	ON
7 SHI Diwen	1520	AB
8 BRICHKO Mike	1518	QC
9 WANG Kelly	1516	QC
10 BELLISSIMO Joseph	1515	ON

GRADE 7

1 WANG Richard	2060	AB
2 KNOX Christopher	1938	ON
3 SHI MingHang	1643	AB
4 BARON Desmond	1632	AB
5 LUDWIG Michael	1598	AB
6 WANG YueKai	1587	AB
7 LEPINE Cedric	1554	QC
8 LUO Zhao Yang	1538	QC
9 DURUPALA Rishi	1508	AB
10 KALRA Agastya	1482	ON

GRADE 8

1 QIN Joey	2238	ON
2 SOHAL Tanraj	2020	BC
3 LI Chang He	2012	BC
4 FLOREA Alexandru	1746	ON
5 LEU Richard	1696	ON
6 NUNEZ-PAINCHAUD Raphael	1632	QC
7 CAI Tony	1613	AB
8 TAN Guang Tong	1504	QC
9 MILNER Arie	1504	BC
10 YAO Houji	1490	QC

GRADE 9

1 KRAIOUCHKINE Nikita	2334	QC
2 MARINKOVIC Mate	2116	ON
3 GUSEV Nikita	2088	ON
4 INIGO Aquino	1930	ON
5 CHENG Jack	1928	BC
6 ZHANG David	1798	AB
7 THOMAS Derek	1712	AB
8 LI David	1710	ON
9 IVANOV Michael	1709	ON
10 ROY Myriam	1678	QC

GRADE 10

1 SAPOZHNIKOV Roman	2391	ON
2 JIANG Louie	2362	QC
3 CALUGAR Arthur	2336	ON
4 YUAN Yuanling	2286	ON
5 XIONG Jerry	2286	ON
6 KAMINSKI Thomas	2223	AB
7 KLEINMAN Michael	2004	ON
8 WANG Jesse	1944	ON
9 LAZO Jan Edmund	1882	AB
10 KEITH-JACQUES Liam	1852	NB

GRADE 11

1 MARTCHENKO Alexander	2331	ON
2 SZALAY Karoly	2302	ON
3 MAI Lloyd	2268	ON
4 MACKINNON Keith	2254	SK
5 RAKOV Pavel	2218	ON
6 PENG Bill	2082	ON
7 MANLEY Jason	1870	NB
8 FAN Brendan	1784	ON
9 WU Aaron	1757	ON
10 HUANG Richard	1704	BC

GRADE 12

1 NORITSYN Nikolay	2508	ON
2 HANSEN Eric	2494	AB
3 THAVANDIRAN Shiyam	2464	ON
4 HAMBLETON Aman	2308	ON
5 ME Kevin	2178	SK
6 LUNA Jose	1937	AB
7 PACE Christopher	1930	ON
8 MRUGALA David	1896	AB
9 ROZYBAKIYEV Rasul	1867	QC
10 ANG Alan	1858	ON

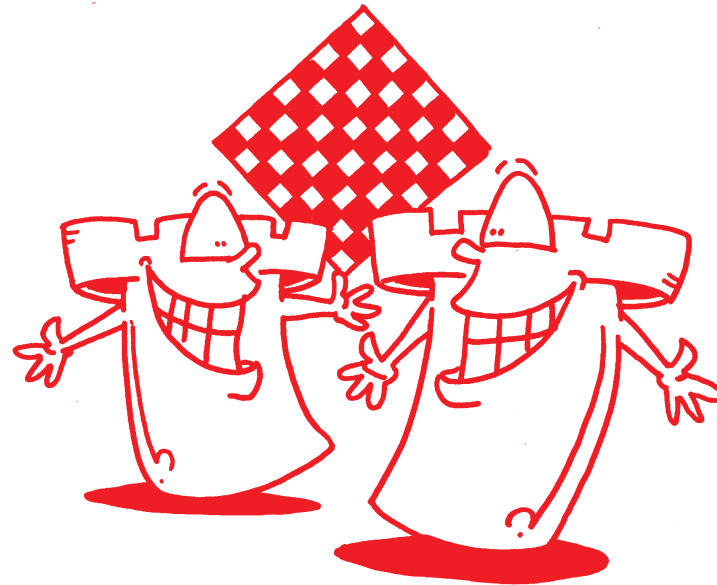
HONOUR ROLL

1 NORITSYN Nikolay	2508	ON
2 HANSEN Eric	2494	AB
3 THAVANDIRAN Shiyam	2464	ON
4 SAPOZHNIKOV Roman	2391	ON
5 JIANG Louie	2362	QC
6 CALUGAR Arthur	2336	ON
7 KRAIOUCHKINE Nikita	2334	QC
8 MARTCHENKO Alexander	2331	ON
9 HAMBLETON Aman	2308	ON
10 SZALAY Karoly	2302	ON

SCHOLAR'S MATE

www.chess-math.org

3423 St. Denis #400
Montreal, Quebec
H2X 3L2



SO LONG, FRIENDS!